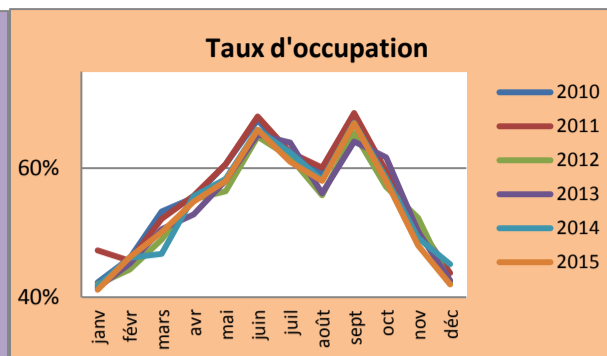
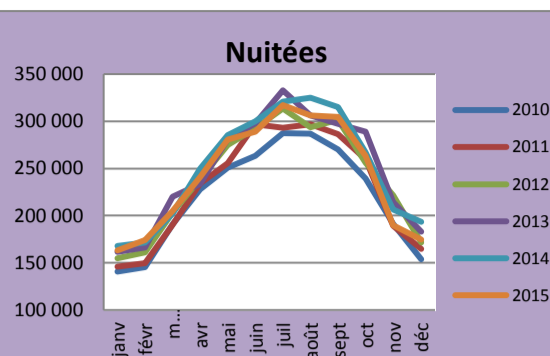
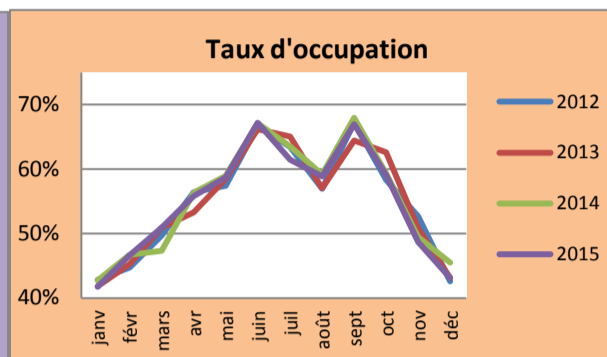
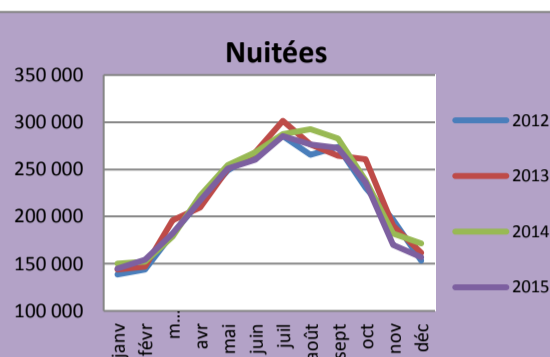


SUIVI D'ACTIVITE 2015 HÔTELLERIE TRADITIONNELLE BILAN DEFINITIF 2015

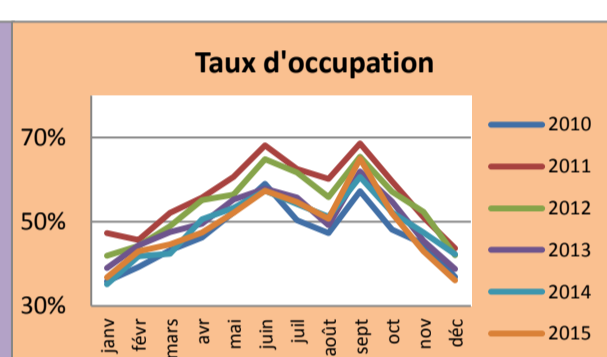
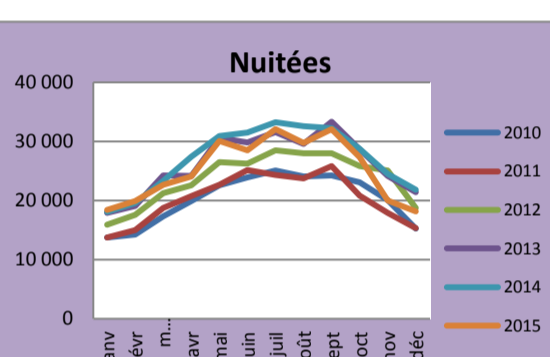
REGION	
NUITEES TOTALES	2 908 796
EVOLUTION CUMUL 2015/2014	-3,16%
NUITEES FRANCAISES	2 077 817
EVOLUTION CUMUL 2015/2014	-3,79%
NUITEES ETRANGERES	830 981
EVOLUTION CUMUL 2015/2014	-1,57%
TAUX D'OCCUPATION	51,03%
EVOLUTION 2015/2014	-0,35%



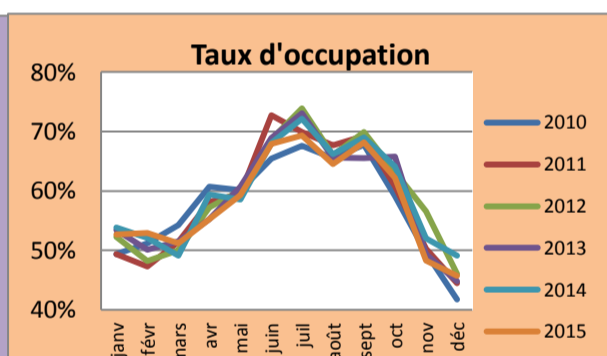
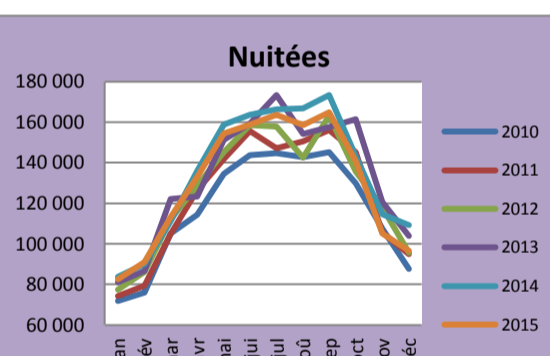
LA CHAMPAGNE	
NUITEES TOTALES	2 605 896
EVOLUTION CUMUL 2015/2014	-2,76%
NUITEES FRANCAISES	1 839 440
EVOLUTION CUMUL 2015/2014	-3,42%
NUITEES ETRANGERES	766 456
EVOLUTION CUMUL 2015/2014	-1,12%
TAUX D'OCCUPATION	55,21%
EVOLUTION 2015/2014	-0,81%



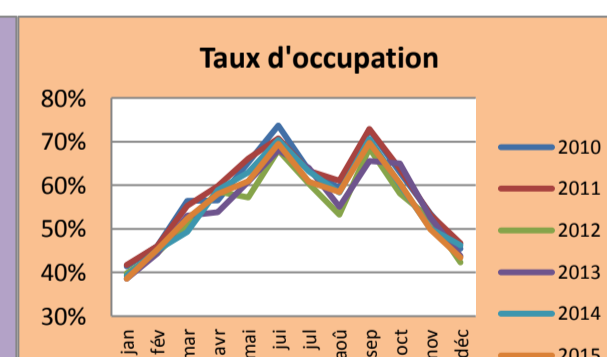
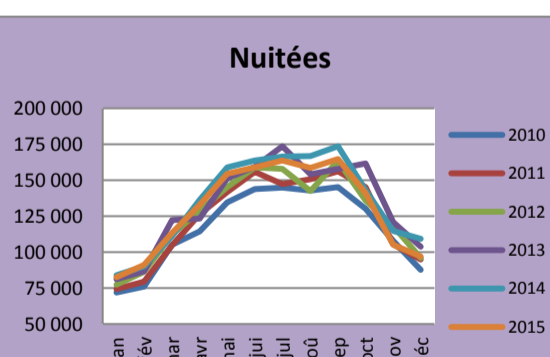
ARDENNES	
NUITEES TOTALES	302 901
EVOLUTION CUMUL 2015/2014	-6,50%
NUITEES FRANCAISES	238 377
EVOLUTION CUMUL 2015/2014	-6,49%
NUITEES ETRANGERES	64 524
EVOLUTION CUMUL 2015/2014	-6,54%
TAUX D'OCCUPATION	48,53%
EVOLUTION 2015/2014	-1,12%



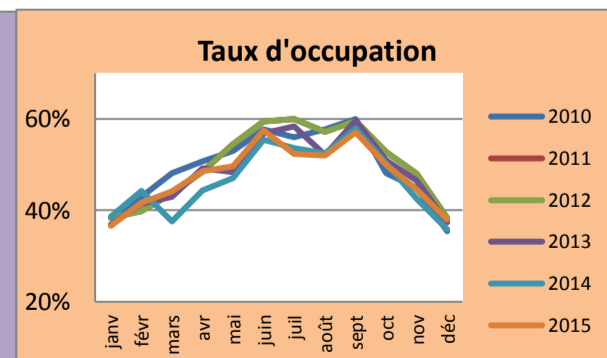
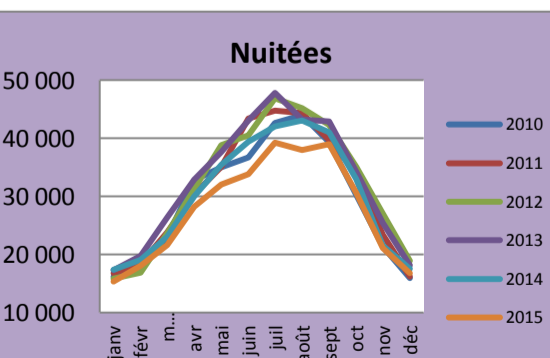
AUBE	
NUITEES TOTALES	710 107
EVOLUTION CUMUL 2015/2014	1,33%
NUITEES FRANCAISES	531 572
EVOLUTION CUMUL 2015/2014	0,88%
NUITEES ETRANGERES	178 536
EVOLUTION CUMUL 2015/2014	2,71%
TAUX D'OCCUPATION	58,24%
EVOLUTION 2015/2014	-2,33%



MARNE	
NUITEES TOTALES	1 562 203
EVOLUTION CUMUL 2015/2014	-3,37%
NUITEES FRANCAISES	1 058 332
EVOLUTION CUMUL 2015/2014	-3,78%
NUITEES ETRANGERES	503 871
EVOLUTION CUMUL 2015/2014	-2,50%
TAUX D'OCCUPATION	55,74%
EVOLUTION 2015/2014	-1,14%



HAUTE MARNE	
NUITEES TOTALES	333 586
EVOLUTION CUMUL 2015/2014	-7,95%
NUITEES FRANCAISES	249 536
EVOLUTION CUMUL 2015/2014	-10,19%
NUITEES ETRANGERES	84 049
EVOLUTION CUMUL 2015/2014	-0,57%
TAUX D'OCCUPATION	48,31%
EVOLUTION 2015/2014	1,88%



Données 2010 à 2013 réropolées avec la nouvelle méthodologie et en introduisant le nouveau classement. Les données 2012 et 2013 communiquées dans les tableaux 2013 ne sont donc pas comparables (modification des critères de redressement).