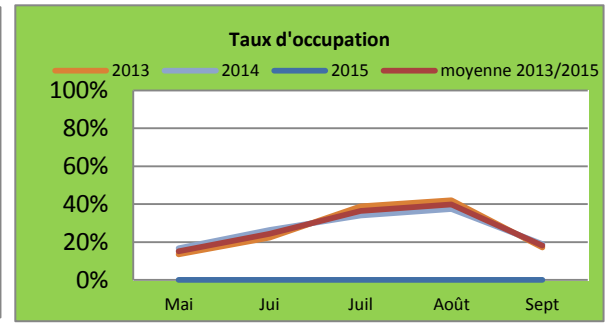
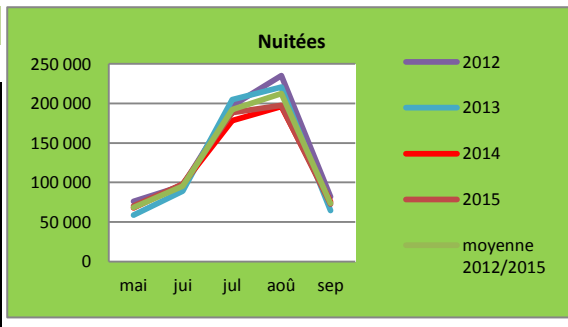


SUIVI D'ACTIVITE 2014

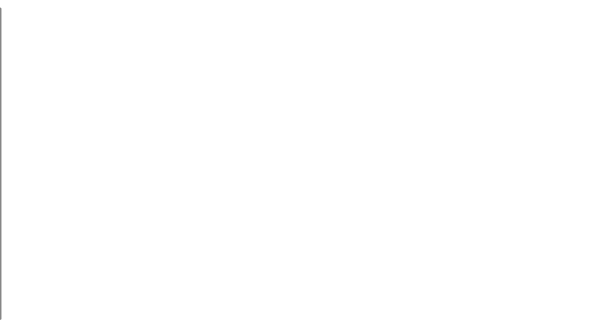
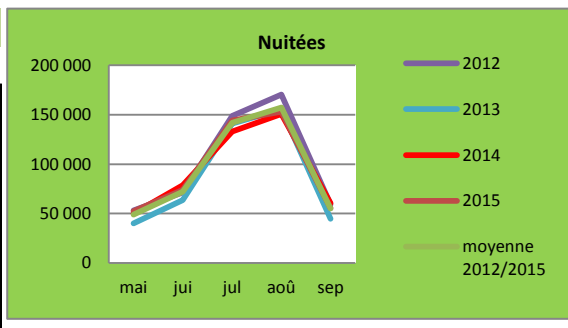
HOTELLERIE DE PLEIN AIR

BILAN ANNUEL de MAI à SEPTEMBRE 2015

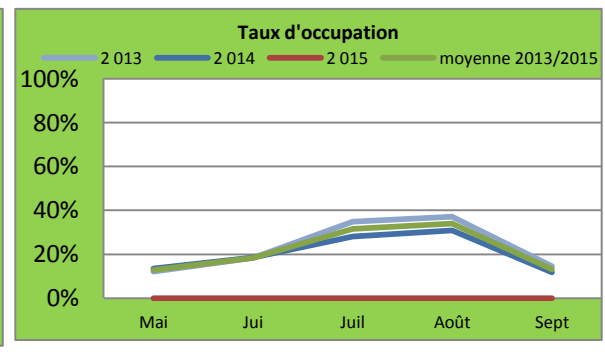
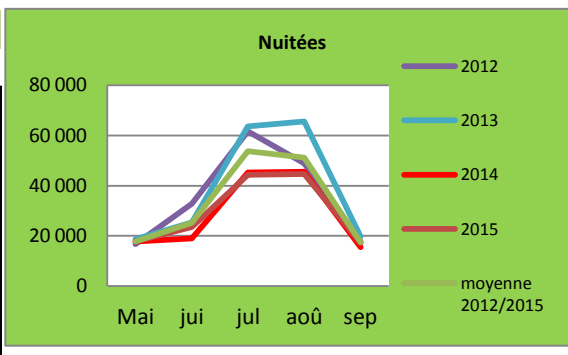
REGION	
NUITEES TOTALES	626 807
Evol. Cumul 2012/2013	1,78%
NUITEES FRANCAISES	273 581
Evol. Cumul 2012/2013	4,58%
NUITEES ETRANGERES	353 226
Evol. Cumul 2012/2013	-0,30%
TAUX D'OCCUPATION	27.69



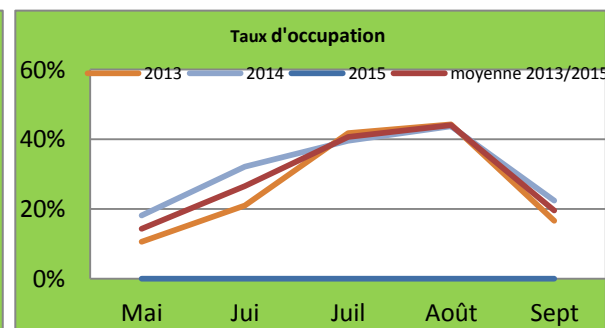
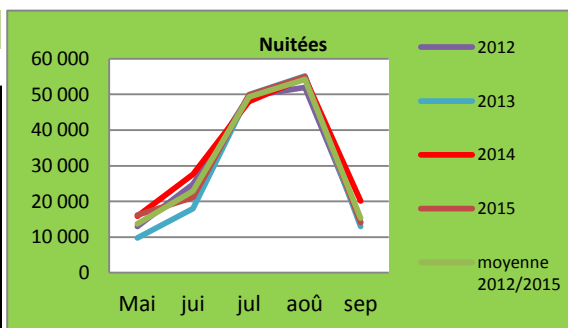
LA CHAMPAGNE	
NUITEES TOTALES	479 125
Evol. Cumul 2012/2013	1,34%
NUITEES FRANCAISES	190 677
Evol. Cumul 2012/2013	3,38%
NUITEES ETRANGERES	288 448
Evol. Cumul 2012/2013	0,03%
TAUX D'OCCUPATION	



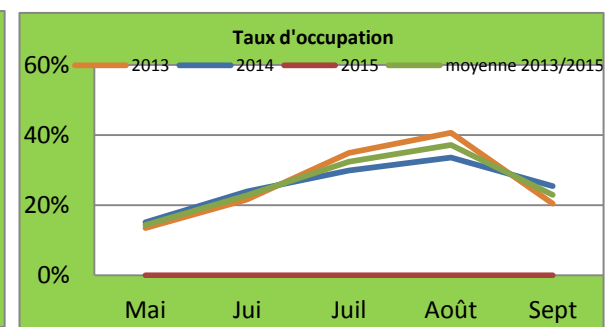
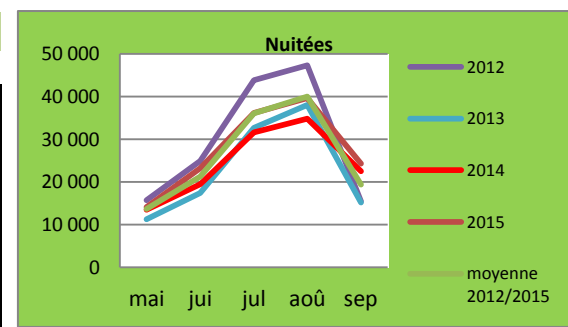
ARDENNES	
NUITEES TOTALES	147 683
Evol. Cumul 2012/2013	3,23%
NUITEES FRANCAISES	82 905
Evol. Cumul 2012/2013	7,46%
NUITEES ETRANGERES	64 778
Evol. Cumul 2012/2013	-1,72%
TAUX D'OCCUPATION	21.56



AUBE	
NUITEES TOTALES	156 168
Evol. Cumul 2012/2013	-5,95%
NUITEES FRANCAISES	67 138
Evol. Cumul 2012/2013	-5,34%
NUITEES ETRANGERES	89 030
Evol. Cumul 2012/2013	-6,40%
TAUX D'OCCUPATION	30.24



MARNE	
NUITEES TOTALES	137 554
Evol. Cumul 2012/2013	12,62%
NUITEES FRANCAISES	62 149
Evol. Cumul 2012/2013	11,98%
NUITEES ETRANGERES	75 405
Evol. Cumul 2012/2013	13,15%
TAUX D'OCCUPATION	29.43



HAUTE MARNE	
NUITEES TOTALES	185 403
Evol. Cumul 2012/2013	0,42%
NUITEES FRANCAISES	61 390
Evol. Cumul 2012/2013	5,82%
NUITEES ETRANGERES	124 013
Evol. Cumul 2012/2013	-2,05%
TAUX D'OCCUPATION	32.4

