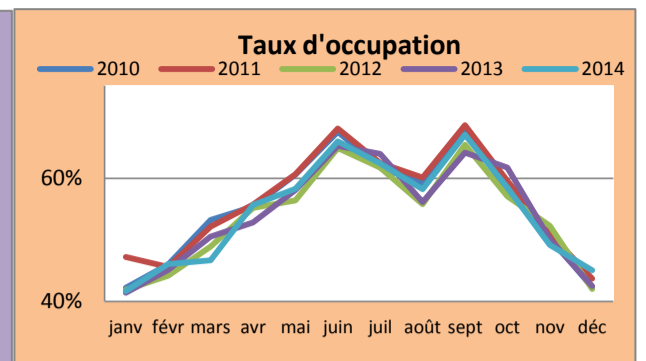
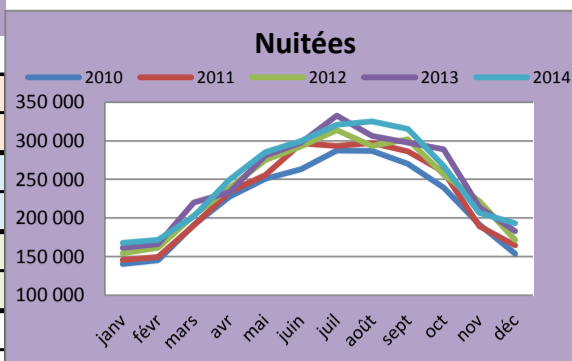


SUIVI D'ACTIVITE 2014

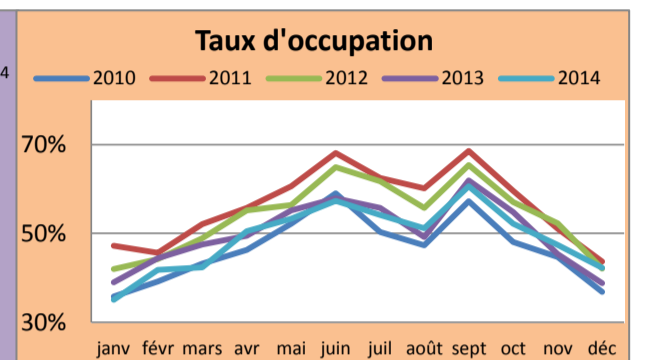
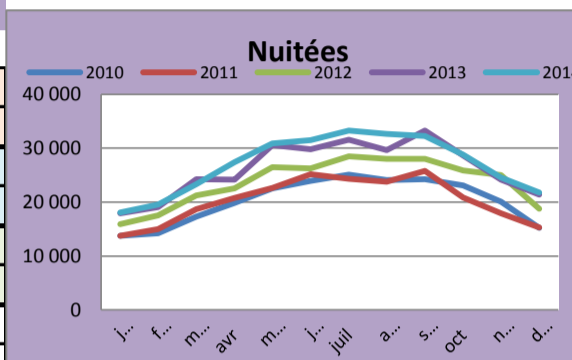
HÔTELLERIE TRADITIONNELLE

BILAN DEFINITIF 2014

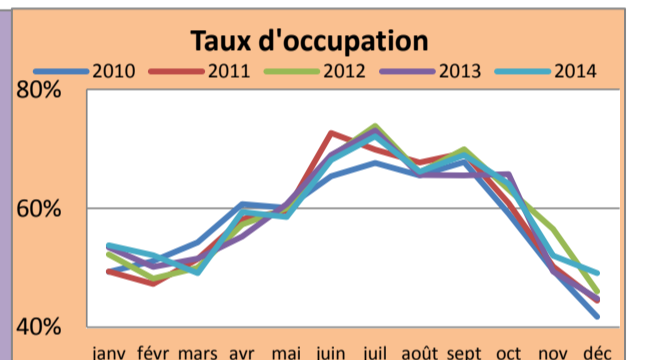
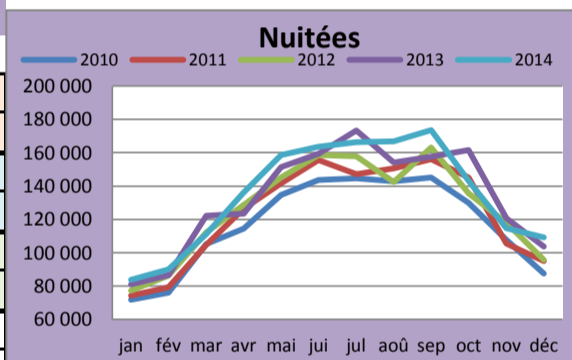
REGION	
NUITEES TOTALES	3 003 790
EVOLUTION CUMUL 2013/2014	0.70%
NUITEES FRANCAISES	2 159 574
EVOLUTION CUMUL 2013/2014	-0.83%
NUITEES ETRANGERES	844 215
EVOLUTION CUMUL 2013/2014	4.82%
TAUX D'OCCUPATION	54.84%
EVOLUTION 2013/2014	0.42%



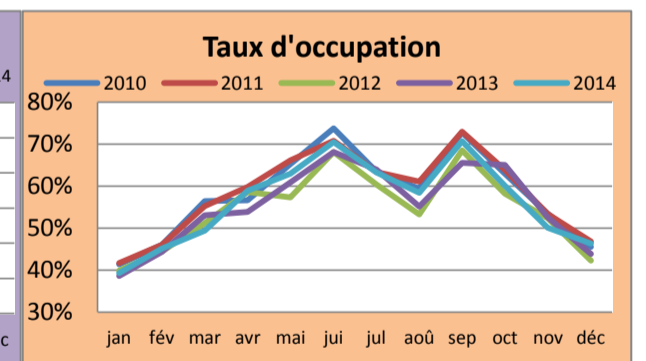
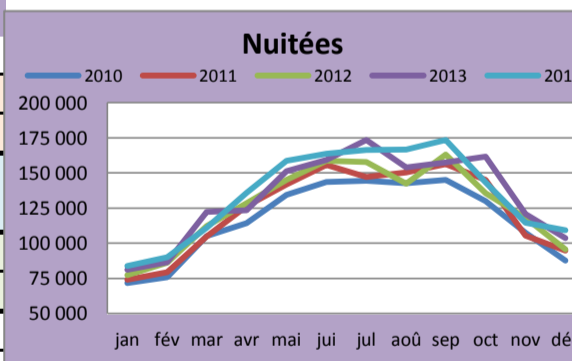
ARDENNES	
NUITEES TOTALES	323 968
EVOLUTION CUMUL 2013/2014	2.99%
NUITEES FRANCAISES	254 927
EVOLUTION CUMUL 2013/2014	1.40%
NUITEES ETRANGERES	69 042
EVOLUTION CUMUL 2013/2014	9.35%
TAUX D'OCCUPATION	49.08%
EVOLUTION 2013/2014	-1.76%



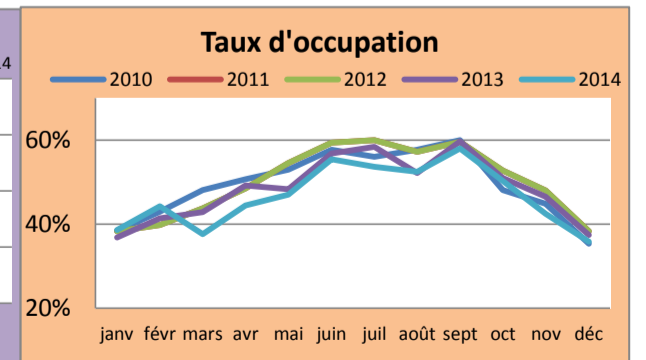
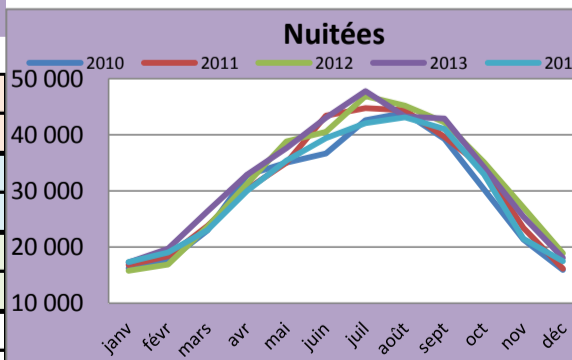
AUBE	
NUITEES TOTALES	700 760
EVOLUTION CUMUL 2013/2014	2.29%
NUITEES FRANCAISES	526 928
EVOLUTION CUMUL 2013/2014	0.28%
NUITEES ETRANGERES	173 832
EVOLUTION CUMUL 2013/2014	8.89%
TAUX D'OCCUPATION	59.63%
EVOLUTION 2013/2014	1.18%



MARNE	
NUITEES TOTALES	1 616 675
EVOLUTION CUMUL 2013/2014	1.38%
NUITEES FRANCAISES	1 099 867
EVOLUTION CUMUL 2013/2014	-0.43%
NUITEES ETRANGERES	516 808
EVOLUTION CUMUL 2013/2014	5.45%
TAUX D'OCCUPATION	58.04%
EVOLUTION 2013/2014	1.79%



HAUTE MARNE	
NUITEES TOTALES	362 387
EVOLUTION CUMUL 2013/2014	-6.75%
NUITEES FRANCAISES	277 853
EVOLUTION CUMUL 2013/2014	-6.18%
NUITEES ETRANGERES	84 534
EVOLUTION CUMUL 2013/2014	-8.59%
TAUX D'OCCUPATION	47.42%
EVOLUTION 2013/2014	-3.66%



Données 2010 à 2013 réropolées avec la nouvelle méthodologie et en introduisant le nouveau classement. Les données 2012 et 2013 communiquées dans les tableaux 2013 ne sont donc pas comparables (modification des critères de redressement).