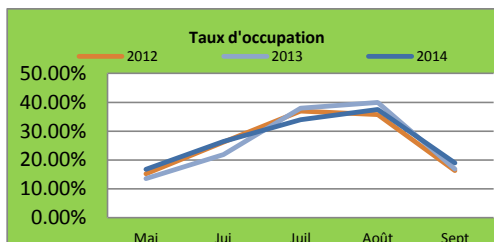
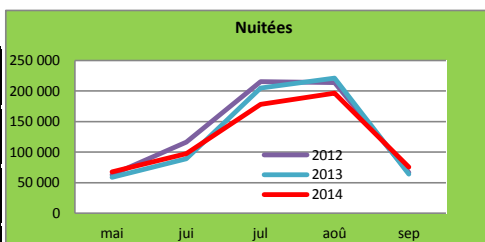


# SUIVI D'ACTIVITE 2014

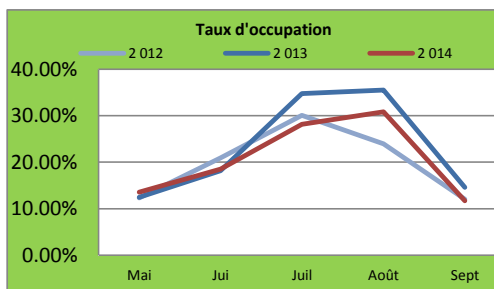
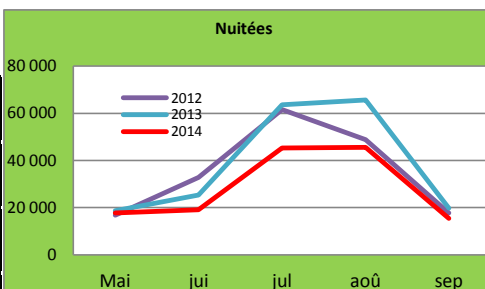
## HOTELLERIE DE PLEIN AIR

### Données définitives saison 2014

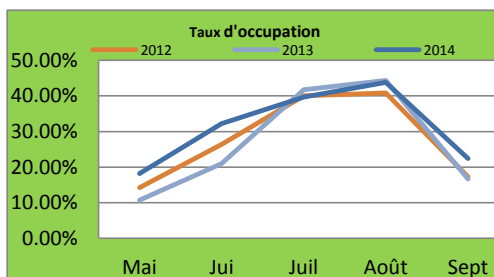
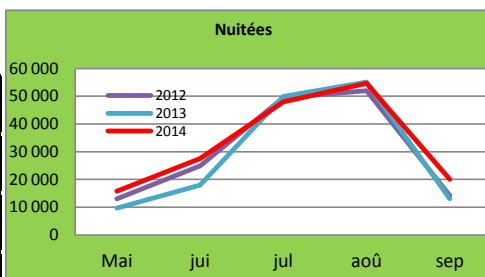
REGION	
NUITEES TOTALES	615 870
Evol. Cumul 2012/2013	-3.40%
NUITEES FRANCAISES	261 591
Evol. Cumul 2012/2013	8.60%
NUITEES ETRANGERES	354 279
Evol. Cumul 2012/2013	-10.69%
TAUX D'OCCUPATION	



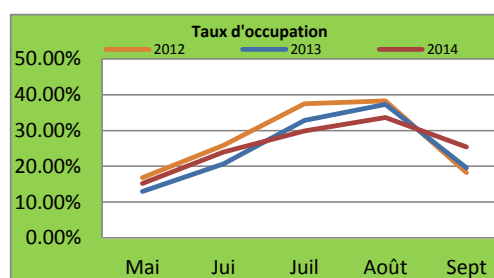
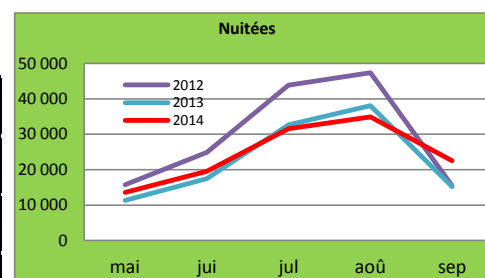
ARDENNES	
NUITEES TOTALES	143 066
Evol. Cumul 2012/2013	-25.89%
NUITEES FRANCAISES	77 153
Evol. Cumul 2012/2013	-11.53%
NUITEES ETRANGERES	65 913
Evol. Cumul 2012/2013	-37.71%
TAUX D'OCCUPATION	



AUBE	
NUITEES TOTALES	166 040
Evol. Cumul 2012/2013	13.95%
NUITEES FRANCAISES	70 923
Evol. Cumul 2012/2013	34.67%
NUITEES ETRANGERES	95 116
Evol. Cumul 2012/2013	2.22%
TAUX D'OCCUPATION	



MARNE	
NUITEES TOTALES	122 138
Evol. Cumul 2012/2013	6.45%
NUITEES FRANCAISES	55 500
Evol. Cumul 2012/2013	19.96%
NUITEES ETRANGERES	66 640
Evol. Cumul 2012/2013	-2.67%
TAUX D'OCCUPATION	



HAUTE MARNE	
NUITEES TOTALES	184 624
Evol. Cumul 2012/2013	0.30%
NUITEES FRANCAISES	58 015
Evol. Cumul 2012/2013	6.01%
NUITEES ETRANGERES	126 610
Evol. Cumul 2012/2013	-2.12%
TAUX D'OCCUPATION	

