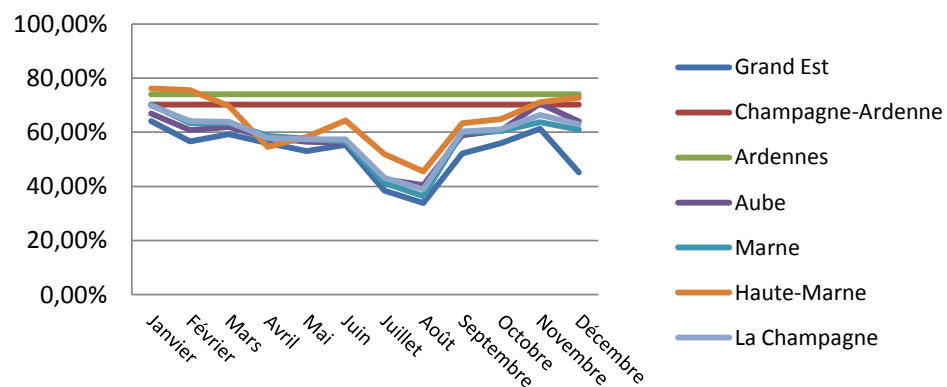


# Tourisme d'affaires 2016

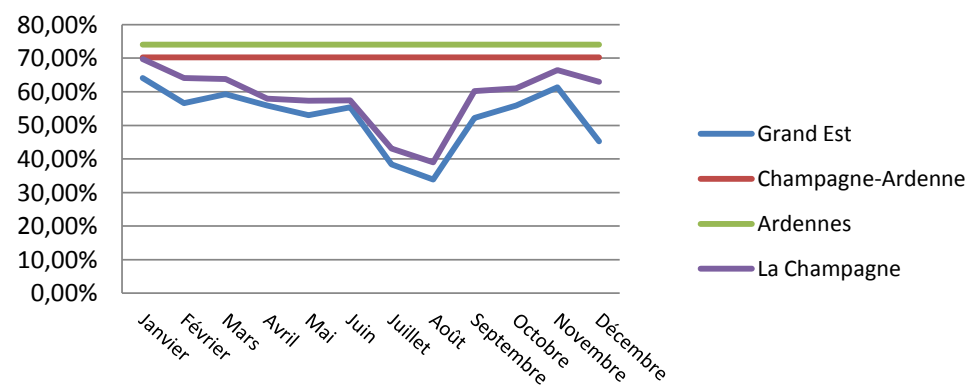
## Part des nuitées Affaires 2016

	Janvier	Février	Mars	Avril	Mai	Juin	Juillet	Août	Septembre	Octobre	Novembre	Décembre
<b>Grand Est</b>	64,10%	56,66%	59,25%	55,91%	52,99%	55,39%	38,37%	33,82%	52,16%	55,94%	61,35%	45,23%
<b>Champagne-Ardenne</b>	70,23%	70,23%	70,23%	70,23%	70,23%	70,23%	70,23%	70,23%	70,23%	70,23%	70,23%	70,23%
<b>Ardennes</b>	74,00%	74,00%	74,00%	74,00%	74,00%	74,00%	74,00%	74,00%	74,00%	74,00%	74,00%	74,00%
<b>Aube</b>	66,91%	60,82%	61,98%	57,95%	56,51%	56,11%	42,62%	40,50%	58,90%	60,72%	70,61%	63,99%
<b>Marne</b>	70,22%	63,39%	63,53%	58,61%	57,59%	56,52%	41,23%	36,38%	60,10%	60,41%	63,71%	60,92%
<b>Haute-Marne</b>	76,20%	75,61%	69,76%	54,58%	58,20%	64,32%	51,92%	45,54%	63,38%	64,85%	71,10%	72,76%
<b>La Champagne</b>	69,78%	64,07%	63,83%	57,94%	57,38%	57,42%	43,13%	38,95%	60,24%	61,07%	66,42%	62,96%

Part des nuitées affaires 2016



Part des nuitées affaires 2016



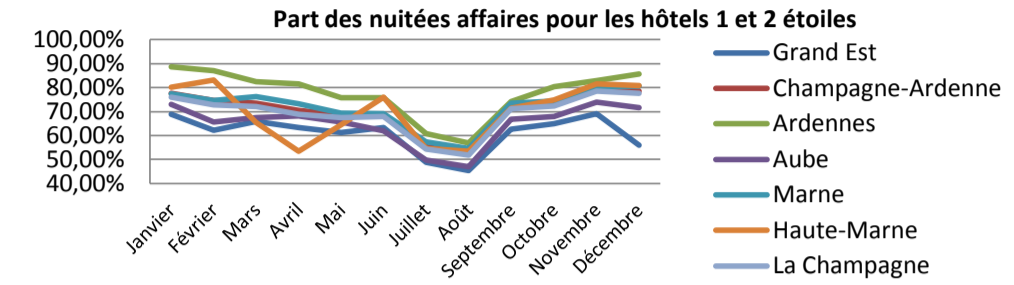
# Tourisme d'affaires

## 2016

Part des nuitées Affaires par catégorie 2016

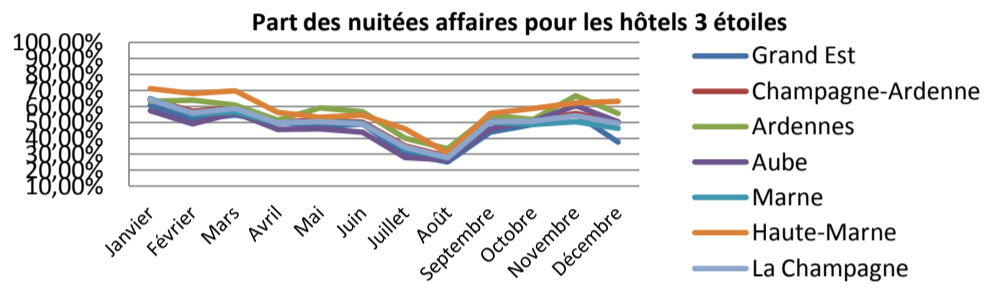
\* et \*\*

	Janvier	Février	Mars	Avril	Mai	Juin	Juillet	Août	Septembre	Octobre	Novembre	Décembre
<b>Grand Est</b>	68,89%	62,17%	65,99%	63,35%	61,19%	63,27%	48,86%	45,42%	62,69%	64,96%	69,20%	55,92%
<b>Champagne-Ardenne</b>	77,67%	74,63%	73,53%	70,59%	68,68%	68,95%	55,22%	52,57%	71,61%	73,38%	79,03%	78,63%
<b>Ardennes</b>	88,74%	87,06%	82,45%	81,66%	75,73%	75,77%	60,83%	56,95%	74,13%	80,48%	82,93%	85,72%
<b>Aube</b>	72,93%	65,66%	67,44%	68,31%	65,75%	61,86%	49,86%	46,99%	66,76%	68,02%	73,96%	71,69%
<b>Marne</b>	77,47%	74,62%	76,23%	73,29%	69,33%	69,18%	57,44%	54,51%	73,59%	74,37%	80,45%	80,52%
<b>Haute-Marne</b>	80,12%	83,05%	65,34%	53,55%	64,60%	75,98%	54,49%	53,40%	71,38%	74,77%	81,48%	80,84%
<b>La Champagne</b>	76,02%	72,79%	72,16%	68,87%	67,50%	68,01%	54,46%	51,87%	71,27%	72,41%	78,47%	77,68%



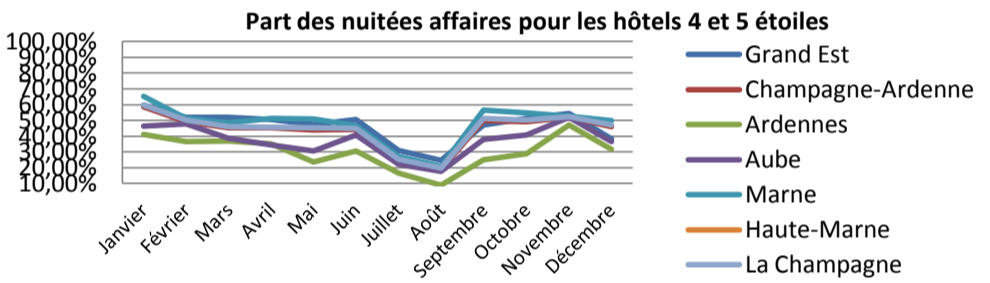
\*\*\*

	Janvier	Février	Mars	Avril	Mai	Juin	Juillet	Août	Septembre	Octobre	Novembre	Décembre
<b>Grand Est</b>	60,83%	51,93%	54,51%	50,58%	46,96%	49,02%	30,50%	25,10%	43,79%	48,62%	55,29%	37,52%
<b>Champagne-Ardenne</b>	64,24%	56,95%	58,90%	50,06%	51,54%	50,01%	35,07%	28,48%	50,73%	50,83%	55,68%	50,08%
<b>Ardennes</b>	63,11%	63,85%	60,76%	51,43%	59,04%	56,61%	40,10%	33,51%	54,57%	51,64%	66,52%	55,65%
<b>Aube</b>	57,47%	48,96%	55,84%	45,55%	45,86%	43,89%	28,00%	26,38%	46,09%	50,83%	60,52%	50,58%
<b>Marne</b>	64,87%	54,92%	56,77%	49,50%	50,71%	49,28%	33,41%	27,55%	50,10%	48,68%	50,32%	46,12%
<b>Haute-Marne</b>	71,24%	67,90%	69,87%	56,18%	53,26%	54,57%	45,92%	30,76%	55,61%	58,61%	62,21%	63,26%
<b>La Champagne</b>	64,42%	55,90%	58,63%	49,86%	50,35%	49,15%	34,43%	27,84%	50,26%	50,73%	54,10%	49,34%



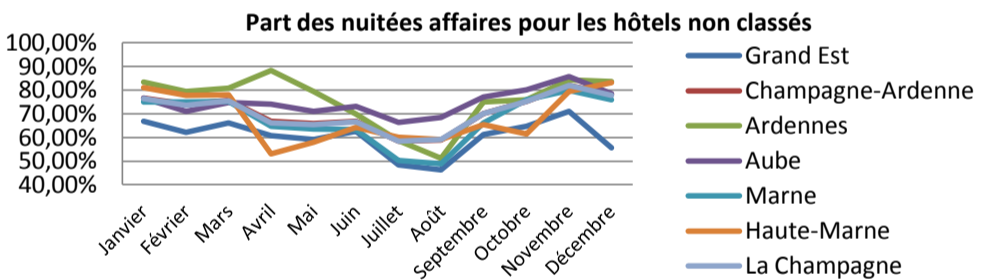
\*\*\*\* et \*\*\*\*\*

	Janvier	Février	Mars	Avril	Mai	Juin	Juillet	Août	Septembre	Octobre	Novembre	Décembre
<b>Grand Est</b>	59,76%	51,91%	52,15%	50,62%	47,51%	50,53%	30,97%	24,84%	47,17%	51,33%	54,57%	38,47%
<b>Champagne-Ardenne</b>	58,54%	49,26%	45,39%	45,27%	43,97%	44,15%	24,93%	19,13%	49,81%	49,08%	52,16%	45,98%
<b>Ardennes</b>	40,99%	36,67%	36,97%	35,08%	23,50%	30,67%	16,50%	9,03%	24,97%	28,84%	47,19%	31,69%
<b>Aube</b>	46,53%	47,64%	38,72%	34,37%	30,53%	40,77%	22,29%	17,82%	38,06%	40,67%	52,11%	36,74%
<b>Marne</b>	65,47%	51,22%	48,40%	51,12%	51,06%	46,61%	27,06%	20,80%	56,38%	54,71%	52,64%	50,01%
<b>Haute-Marne</b>	nd	nd	nd	nd	nd	nd	nd	nd	nd	nd	nd	nd
<b>La Champagne</b>	59,66%	50,23%	45,92%	45,86%	45,38%	44,96%	25,43%	19,73%	51,36%	50,39%	52,51%	47,05%



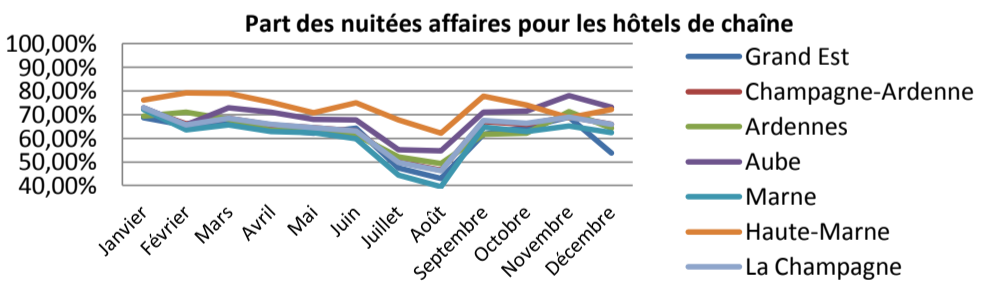
non classés

	Janvier	Février	Mars	Avril	Mai	Juin	Juillet	Août	Septembre	Octobre	Novembre	Décembre
<b>Grand Est</b>	66,77%	62,17%	66,02%	60,76%	59,07%	62,62%	48,42%	46,27%	61,34%	64,71%	71,09%	55,70%
<b>Champagne-Ardenne</b>	76,74%	73,96%	75,61%	66,88%	65,86%	66,81%	58,50%	58,88%	70,17%	75,16%	82,12%	78,19%
<b>Ardennes</b>	83,46%	79,38%	80,82%	88,20%	79,40%	69,83%	58,63%	51,31%	74,98%	75,88%	84,25%	83,68%
<b>Aube</b>	76,68%	71,01%	74,67%	74,05%	71,00%	73,06%	66,37%	68,55%	76,99%	80,19%	85,68%	78,58%
<b>Marne</b>	75,04%	74,94%	75,25%	64,73%	63,57%	63,43%	50,28%	48,98%	66,16%	75,84%	79,85%	76,02%
<b>Haute-Marne</b>	81,09%	77,77%	77,93%	53,08%	58,06%	64,16%	60,15%	59,03%	65,32%	61,36%	79,38%	83,17%
<b>La Champagne</b>	76,36%	73,69%	75,38%	66,20%	65,33%	66,69%	58,49%	59,18%	69,99%	75,13%	81,99%	77,90%



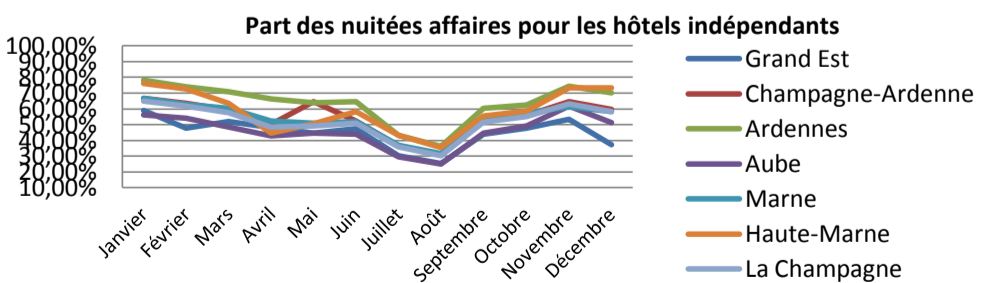
Chaîne

	Janvier	Février	Mars	Avril	Mai	Juin	Juillet	Août	Septembre	Octobre	Novembre	Décembre
<b>Grand Est</b>	68,69%	65,44%	66,24%	63,74%	62,14%	64,16%	47,49%	43,14%	61,70%	64,74%	68,85%	53,77%
<b>Champagne-Ardenne</b>	72,50%	66,09%	68,44%	65,75%	64,44%	63,04%	49,95%	46,59%	67,11%	65,91%	69,08%	65,85%
<b>Ardennes</b>	69,50%	70,93%	67,89%	63,32%	63,43%	61,51%	52,23%	49,40%	61,76%	62,17%	71,16%	64,32%
<b>Aube</b>	72,99%	65,65%	72,95%	71,08%	68,04%	67,78%	55,26%	54,73%	70,93%	71,56%	77,99%	73,07%
<b>Marne</b>	72,19%	63,68%	65,57%	62,87%	62,41%	59,91%	44,36%	39,62%	64,83%	62,80%	65,28%	62,37%
<b>Haute-Marne</b>	76,21%	79,14%	78,93%	75,29%	70,75%	74,95%	67,68%	62,19%	77,89%	74,08%	68,76%	72,31%
<b>La Champagne</b>	72,79%	65,59%	68,50%	66,00%	64,56%	63,19%	49,73%	46,30%	67,60%	66,27%	68,86%	65,98%



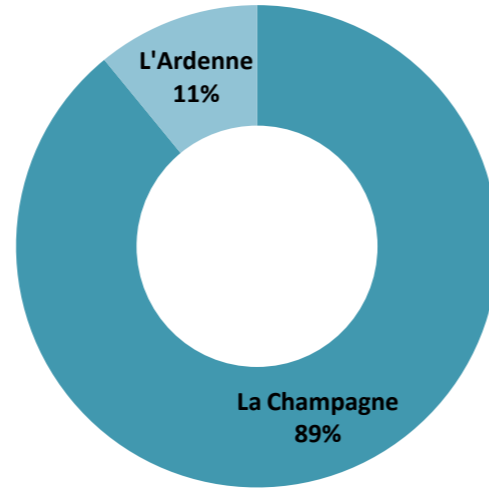
Indépendants

	Janvier	Février	Mars	Avril	Mai	Juin	Juillet	Août	Septembre	Octobre	Novembre	Décembre
<b>Grand Est</b>	58,87%	47,81%	51,89%	48,08%	44,67%	47,41%	30,21%	25,54%	43,80%	47,81%	53,40%	37,22%
<b>Champagne-Ardenne</b>	66,82%	63,40%	59,23%	50,33%	64,44%	52,38%	36,63%	30,91%	52,44%	55,86%	64,63%	59,72%
<b>Ardennes</b>	78,31%	73,95%	70,74%	66,35%	63,95%	64,47%	43,31%	36,42%	60,34%	62,54%	74,27%	70,18%
<b>Aube</b>	56,25%	54,09%	48,58%	42,86%	44,81%	44,02%	29,47%	24,88%	44,50%	49,16%	61,71%	51,38%
<b>Marne</b>	66,84%	62,89%	60,32%	52,48%	51,08%	51,93%	37,00%	31,59%	53,48%	57,20%	61,46%	58,39%
<b>Haute-Marne</b>	76,19%	72,62%	63,59%	44,48%	50,70%	58,21%	43,41%	35,71%	55,34%	58,51%	73,19%	73,29%
<b>La Champagne</b>	64,98%	61,80%	57,61%	48,36%	49,27%	50,90%	35,87%	30,24%	51,51%	55,06%	63,26%	58,21%

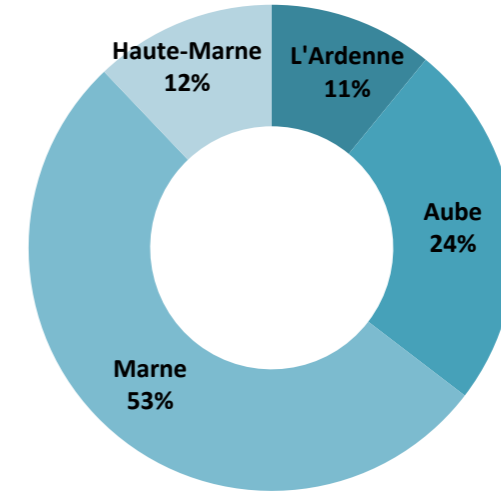


Volume nuitées affaire 2016	
Grand-Est	7004072
Champagne-Ardenne	1699919
La Champagne	1514286
L'Ardenne	185629
Aube	416073
Marne	892395
Haute-Marne	205817

Volume nuitées affaire 2016



Volume nuitées affaire 2016



Part annuelle	
Grand-Est	51,27%
Champagne-Ardenne	57,67%
La Champagne	57,16%
L'Ardenne	62,15%
Aube	56,44%
Marne	56,53%
Haute-Marne	61,75%

Part annuelle du tourisme d'affaire 2016

