

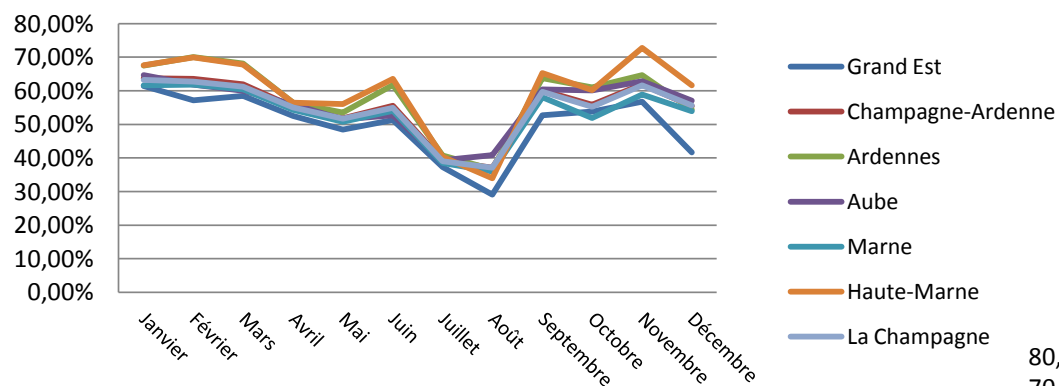
# Tourisme d'affaires

## 2015

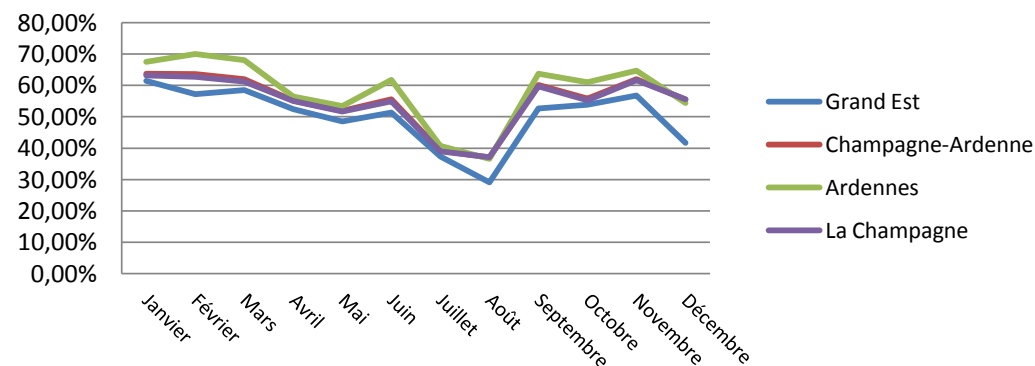
### Part des nuitées Affaires

	Janvier	Février	Mars	Avril	Mai	Juin	Juillet	Août	Septembre	Octobre	Novembre	Décembre
<b>Grand Est</b>	61,47%	57,19%	58,52%	52,46%	48,48%	51,30%	37,32%	29,10%	52,66%	53,80%	56,75%	41,67%
<b>Champagne-Ardenne</b>	63,71%	63,58%	61,95%	55,19%	51,84%	55,59%	39,18%	37,06%	60,13%	55,84%	61,93%	55,48%
<b>Ardennes</b>	67,50%	70,00%	68,09%	56,50%	53,47%	61,76%	40,76%	36,56%	63,71%	61,03%	64,66%	54,38%
<b>Aube</b>	64,68%	61,83%	59,97%	55,97%	51,49%	52,71%	39,34%	40,80%	60,45%	60,08%	62,79%	57,03%
<b>Marne</b>	61,60%	61,78%	60,42%	54,36%	50,79%	54,03%	38,51%	36,01%	58,08%	51,93%	58,89%	53,90%
<b>Haute-Marne</b>	67,56%	69,98%	67,81%	56,46%	56,09%	63,53%	40,31%	34,00%	65,28%	60,24%	72,74%	61,61%
<b>La Champagne</b>	63,23%	62,75%	61,18%	55,05%	51,65%	54,92%	39,00%	37,12%	59,71%	55,24%	61,61%	55,61%

Part des nuitées affaires 2015



Part des nuitées affaires 2015



## Tourisme d'affaires

2015

Part des nuitées Affaires par catégorie  
\* et \*\*

	Janvier	Février	Mars	Avril	Mai	Juin	Juillet	Août	Septembre	Octobre	Novembre	Décembre
<b>Grand Est</b>	63,49%	61,07%	61,67%	57,68%	53,34%	55,75%	41,69%	32,80%	58,96%	60,35%	61,33%	45,05%
<b>Champagne-Ardenne</b>	67,13%	69,82%	70,82%	62,54%	61,23%	63,76%	46,86%	45,63%	71,19%	68,94%	72,80%	61,93%
<b>Ardennes</b>	79,38%	78,19%	76,72%	61,85%	63,21%	70,37%	50,72%	44,94%	71,20%	72,44%	76,75%	63,89%
<b>Aube</b>	68,02%	63,28%	68,46%	64,31%	62,66%	62,11%	48,00%	46,64%	75,92%	75,29%	73,06%	61,88%
<b>Marne</b>	62,15%	69,95%	70,39%	63,16%	59,26%	62,24%	47,91%	45,89%	69,13%	65,56%	71,17%	61,42%
<b>Haute-Marne</b>	71,21%	73,32%	70,27%	58,46%	63,40%	66,13%	38,40%	43,60%	69,70%	63,22%	74,84%	62,26%
<b>La Champagne</b>	65,11%	68,42%	69,87%	62,65%	60,91%	62,84%	46,32%	45,73%	71,18%	68,47%	72,26%	61,67%

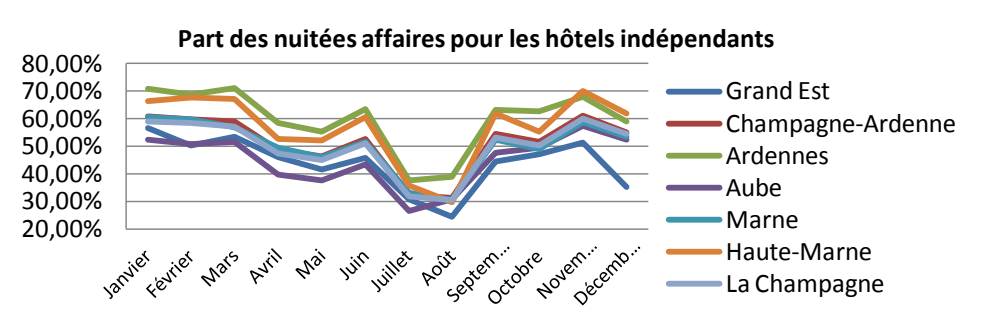
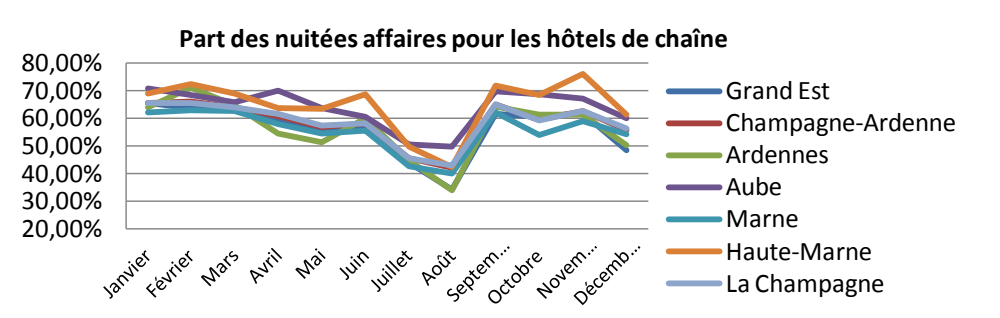
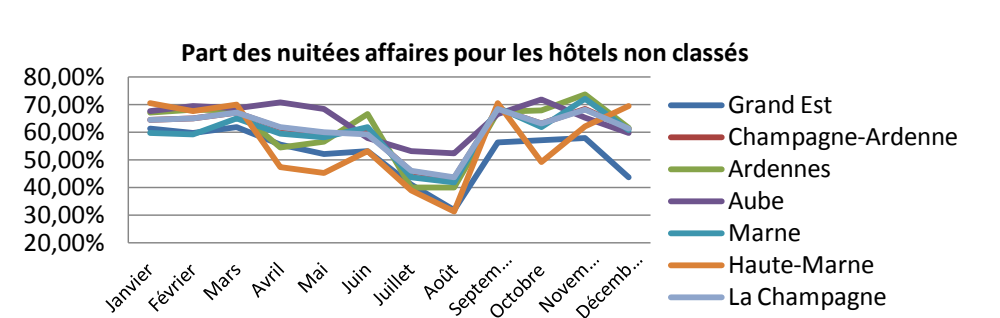
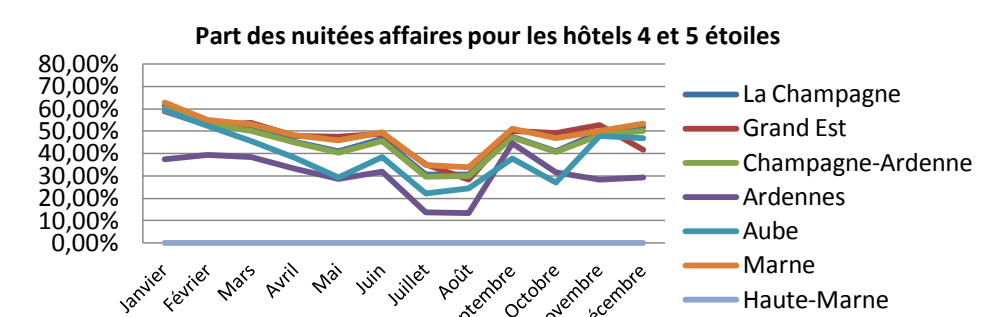
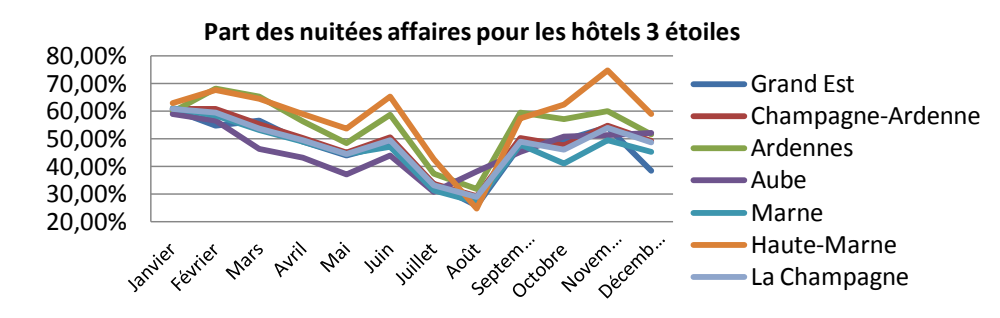
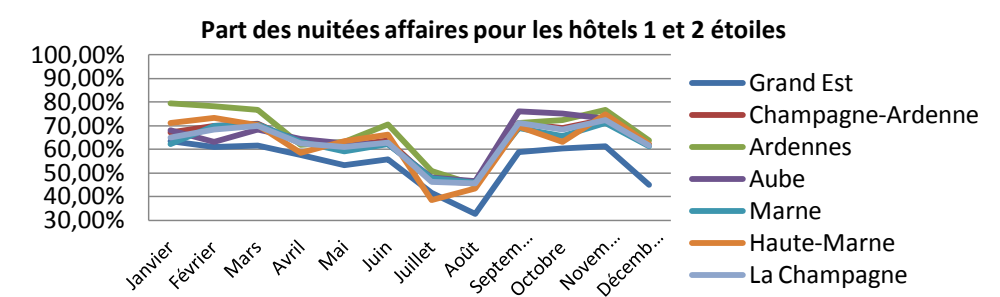
***	Janvier	Février	Mars	Avril	Mai	Juin	Juillet	Août	Septembre	Octobre	Novembre	Décembre
<b>Grand Est</b>	60,71%	54,72%	56,61%	49,01%	44,02%	48,33%	33,72%	25,84%	47,69%	49,45%	54,28%	38,45%
<b>Champagne-Ardenne</b>	60,84%	60,84%	55,28%	50,33%	45,19%	50,57%	33,70%	29,44%	50,42%	47,71%	54,79%	49,28%
<b>Ardennes</b>	59,95%	68,36%	65,47%	56,29%	48,55%	58,77%	37,41%	31,87%	59,49%	57,15%	60,11%	51,76%
<b>Aube</b>	59,12%	56,69%	46,35%	43,15%	37,20%	44,17%	30,85%	38,17%	45,32%	50,99%	51,39%	52,28%
<b>Marne</b>	61,14%	58,56%	53,16%	49,09%	44,58%	47,27%	31,33%	27,20%	47,94%	41,20%	49,49%	45,42%
<b>Haute-Marne</b>	62,97%	67,76%	64,63%	59,07%	53,81%	65,47%	42,85%	24,91%	57,60%	62,46%	74,74%	59,05%
<b>La Champagne</b>	60,98%	59,68%	53,74%	49,53%	44,70%	49,49%	33,19%	29,14%	49,07%	46,26%	54,02%	48,91%

**** et *****	Janvier	Février	Mars	Avril	Mai	Juin	Juillet	Août	Septembre	Octobre	Novembre	Décembre
<b>Grand Est</b>	59,05%	52,62%	53,55%	47,90%	47,37%	48,74%	35,30%	28,39%	50,15%	49,26%	52,83%	41,60%
<b>Champagne-Ardenne</b>	59,88%	53,07%	50,26%	44,77%	40,38%	45,59%	29,72%	29,84%	47,35%	40,60%	48,14%	50,06%
<b>Ardennes</b>	37,37%	39,54%	38,53%	33,32%	28,53%	31,91%	13,75%	13,37%	44,56%	31,48%	28,20%	29,32%
<b>Aube</b>	59,14%	52,35%	45,54%	38,24%	29,14%	38,38%	21,99%	24,32%	37,73%	26,97%	47,80%	46,72%
<b>Marne</b>	62,84%	54,87%	53,16%	48,18%	45,82%	49,55%	34,70%	33,87%	50,95%	46,99%	50,07%	53,25%
<b>Haute-Marne</b>	nd	nd	nd	nd	nd	nd	nd	nd	nd	nd	nd	nd
<b>La Champagne</b>	61,58%	54,17%	51,14%	45,39%	41,12%	46,39%	30,60%	30,73%	47,53%	41,16%	49,53%	51,70%

non classés	Janvier	Février	Mars	Avril	Mai	Juin	Juillet	Août	Septembre	Octobre	Novembre	Décembre
<b>Grand Est</b>	61,32%	59,69%	61,80%	55,59%	51,97%	53,19%	41,01%	31,75%	56,32%	57,20%	57,99%	43,67%
<b>Champagne-Ardenne</b>	64,61%	65,11%	67,09%	61,62%	59,83%	59,62%	45,66%	43,32%	68,44%	63,21%	68,54%	61,39%
<b>Ardennes</b>	67,08%	68,28%	67,89%	54,38%	56,47%	66,57%	40,03%	39,96%	67,50%	67,94%	73,70%	61,72%
<b>Aube</b>	67,54%	69,44%	68,66%	70,76%	68,51%	57,92%	53,06%	52,48%	66,62%	71,97%	65,36%	59,88%
<b>Marne</b>	59,71%	59,32%	65,11%	59,39%	61,89%	61,89%	43,62%	41,92%	68,93%	61,87%	72,15%	60,92%
<b>Haute-Marne</b>	70,67%	67,55%	70,15%	47,47%	45,30%	53,27%	38,96%	31,34%	70,67%	49,14%	62,11%	69,59%
<b>La Champagne</b>	64,49%	64,99%	67,05%	61,96%	60,00%	59,26%	46,07%	43,55%	68,49%	63,19%	68,25%	61,37%

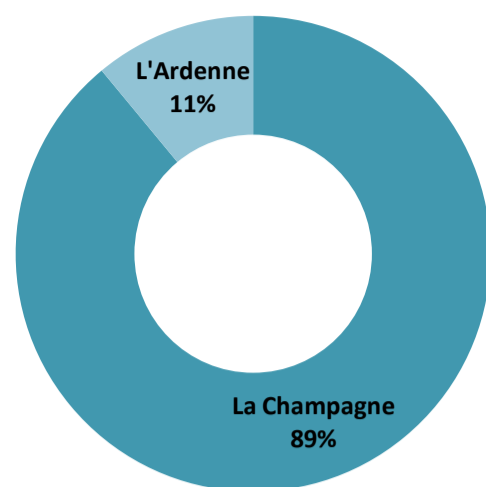
Chaîne	Janvier	Février	Mars	Avril	Mai	Juin	Juillet	Août	Septembre	Octobre	Novembre	Décembre
<b>Grand Est</b>	65,50%	63,80%	63,25%	58,88%	55,73%	57,08%	44,04%	34,04%	61,56%	60,45%	61,77%	48,29%
<b>Champagne-Ardenne</b>	65,42%	66,03%	64,07%	60,85%	56,90%	58,22%	45,39%	42,16%	64,94%	59,51%	62,57%	55,80%
<b>Ardennes</b>	64,06%	71,08%	64,83%	54,42%	51,44%	59,98%	44,61%	33,91%	64,27%	61,21%	61,39%	50,23%
<b>Aube</b>	70,76%	68,55%	65,76%	70,05%	63,66%	60,60%	50,50%	49,78%	69,77%	68,73%	67,12%	60,11%
<b>Marne</b>	62,13%	62,99%	62,66%	57,91%	54,36%	55,66%	42,51%	39,88%	62,08%	54,01%	58,97%	54,13%
<b>Haute-Marne</b>	68,88%	72,42%	68,85%	63,61%	63,32%	68,65%	49,67%	42,29%	71,81%	68,43%	76,03%	61,34%
<b>La Champagne</b>	65,55%	65,48%	64,00%	61,49%	57,49%	58,05%	45,46%	42,93%	65,01%	59,34%	62,69%	56,35%

Indépendants	Janvier	Février	Mars	Avril	Mai	Juin	Juillet	Août	Septembre	Octobre	Novembre	Décembre
<b>Grand Est</b>	56,60%	50,34%	53,31%	46,03%	41,48%	45,79%	30,83%	24,49%	44,40%	47,20%	51,26%	35,29%
<b>Champagne-Ardenne</b>	60,75%	59,83%	59,06%	48,67%	46,17%	52,52%	32,43%	31,36%	54,44%	51,52%	61,09%	54,98%
<b>Ardennes</b>	70,81%	68,83%	71,07%	58,47%	55,35%	63,42%	37,60%	38,85%	63,21%	62,71%	67,91%	58,88%
<b>Aube</b>	52,24%	50,75%	51,65%	39,70%	37,63%	43,34%	26,57%	30,62%	47,60%	49,48%	57,31%	52,26%
<b>Marne</b>	60,51%	59,62%	56,78%	49,38%	45,99%	51,70%	33,17%	30,56%	52,41%	49,01%	58,76%	53,47%
<b>Haute-Marne</b>	66,28%	67,78%	67,05%	52,61%	52,19%	60,66%	35,62%	29,81%	61,76%	55,33%	69,92%	61,84%
<b>La Champagne</b>	58,86%	58,37%	57,15%	47,46%	44,94%	51,16%	31,76%	30,43%	53,22%	50,27%	60,14%	54,43%

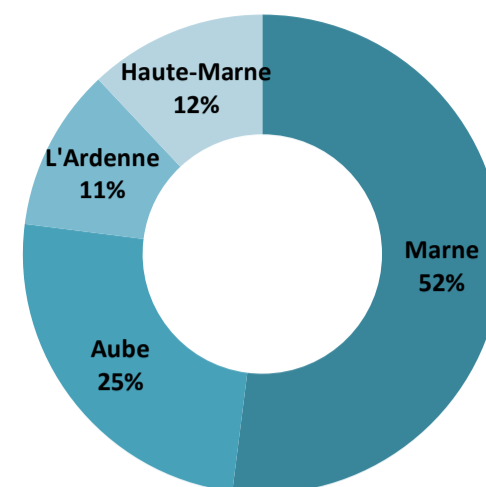


**Volume nuitées affaires 2015**

Volume nuitées affaires 2015	
Grand-Est	6499552
Champagne-Ardenne	1567313
La Champagne	1393982
L'Ardenne	173331
Aube	384652
Marne	816929
Haute-Marne	192401



**Volume nuitées affaires 2015**



**Part annuelle du tourisme d'affaires**

Part annuelle	
Grand-Est	48,53%
Champagne-Ardenne	53,75%
La Champagne	53,37%
L'Ardenne	57,09%
Aube	54,13%
Marne	52,17%
Haute-Marne	57,36%

