

Occupation totale

Hôtel

Champagne-Ardenne

ch disponibles

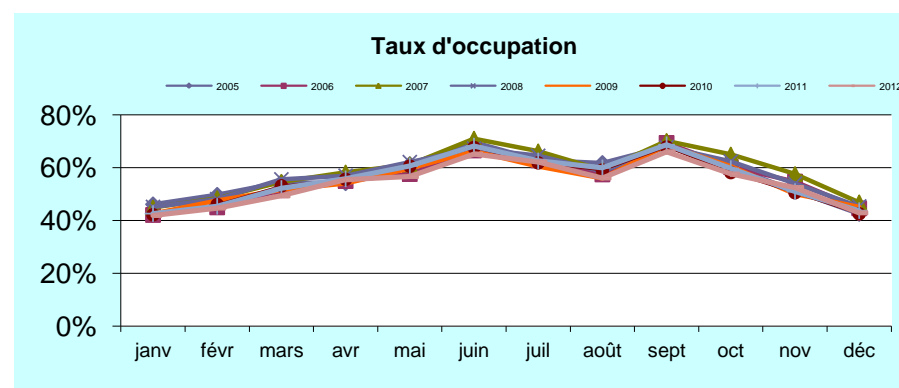
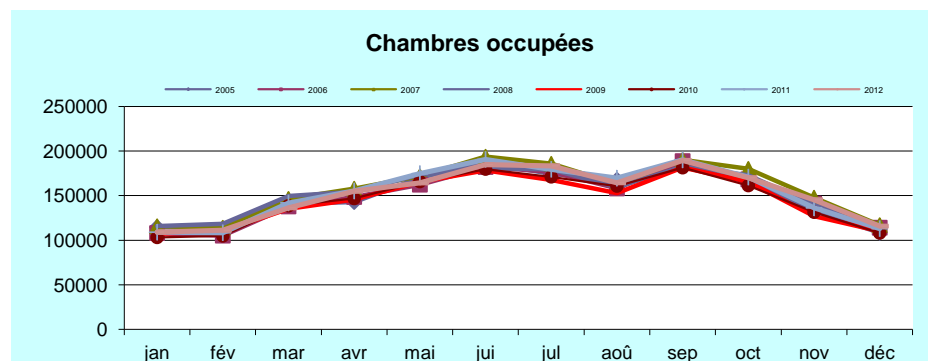
| | janv | févr | mars | avr | mai | juin | juil | août | sept | oct | nov | déc | annuel | cumul | 11/12 |
|------|--------|--------|--------|--------|--------|--------|--------|--------|--------|--------|--------|--------|------------------|-----------|-------|
| 2005 | 248687 | 227045 | 258459 | 263964 | 277354 | 268438 | 277465 | 271568 | 270756 | 277694 | 259166 | 255105 | 3 155 701 | 3 155 701 | |
| 2006 | 256693 | 233979 | 267993 | 270403 | 281843 | 273780 | 281397 | 275160 | 271982 | 279066 | 257778 | 255739 | 3 205 284 | 3 205 284 | |
| 2007 | 257580 | 235264 | 267842 | 271133 | 280531 | 272695 | 280507 | 275140 | 270760 | 276930 | 256523 | 249353 | 3 194 203 | 3 194 203 | |
| 2008 | 256340 | 245868 | 269432 | 271030 | 279479 | 269161 | 278081 | 272756 | 268696 | 277299 | 258770 | 250881 | 3 197 583 | 3 197 583 | |
| 2009 | 251603 | 231666 | 262286 | 269616 | 277288 | 269136 | 277040 | 272691 | 265218 | 272740 | 253752 | 243725 | 3 146 048 | 3 146 048 | |
| 2010 | 244617 | 227717 | 260970 | 263972 | 273640 | 265608 | 276717 | 271938 | 267192 | 277377 | 260216 | 254282 | 3 144 246 | 3 144 246 | -0,1% |
| 2011 | 255966 | 239019 | 272023 | 278197 | 287908 | 279467 | 286871 | 282898 | 276708 | 286276 | 267619 | 258527 | 3 271 479 | 3 271 479 | 4,0% |
| 2012 | 260588 | 248533 | 276257 | 279422 | 289824 | 283615 | 295304 | 293148 | 286980 | 295376 | 277001 | 269925 | 3 355 973 | 3 355 973 | 2,6% |

ch occupées

| | jan | fév | mar | avr | mai | juin | juil | août | sep | oct | nov | déc | annuel | cumul | 11/12 |
|------|--------|--------|--------|--------|--------|--------|--------|--------|--------|--------|--------|--------|------------------|-----------|-------|
| 2005 | 114657 | 112886 | 140904 | 142814 | 170228 | 186939 | 174287 | 167791 | 184287 | 167834 | 132617 | 108339 | 1 803 583 | 1 803 583 | |
| 2006 | 107996 | 105165 | 137878 | 148500 | 162299 | 182108 | 176597 | 158050 | 188706 | 168275 | 141105 | 114016 | 1 789 963 | 1 789 963 | |
| 2007 | 115658 | 114010 | 146354 | 157825 | 171706 | 193693 | 185696 | 162697 | 189986 | 180009 | 147775 | 116907 | 1 882 315 | 1 882 315 | |
| 2008 | 115700 | 118197 | 149694 | 154370 | 173618 | 181001 | 179358 | 159721 | 182154 | 172918 | 139670 | 113656 | 1 839 974 | 1 839 974 | |
| 2009 | 107142 | 110064 | 135158 | 145555 | 165552 | 178265 | 167473 | 152641 | 181642 | 165243 | 127016 | 110118 | 1 745 496 | 1 745 496 | |
| 2010 | 103130 | 104822 | 138596 | 146743 | 165744 | 179703 | 171045 | 160675 | 181267 | 161250 | 131415 | 108085 | 1 752 475 | 1 752 475 | 0,4% |
| 2011 | 109013 | 108390 | 141804 | 155212 | 174639 | 190544 | 179544 | 169566 | 190100 | 170810 | 136314 | 113011 | 1 838 946 | 1 838 946 | 4,9% |
| 2012 | 109133 | 111102 | 136314 | 154965 | 164235 | 184795 | 183481 | 164443 | 189489 | 170091 | 145376 | 115767 | 1 829 190 | 1 829 190 | -0,5% |

Tx occupation

| | janv | févr | mars | avr | mai | juin | juil | août | sept | oct | nov | déc | annuel | cumul | 11/12 |
|------|------|------|------|-----|-----|------|------|------|------|-----|-----|-----|--------------|-------|-------|
| 2005 | 46% | 50% | 55% | 54% | 61% | 70% | 63% | 62% | 68% | 60% | 51% | 42% | 57,2% | 57,2% | |
| 2006 | 42% | 45% | 51% | 55% | 58% | 67% | 63% | 57% | 69% | 60% | 55% | 45% | 55,8% | 55,8% | |
| 2007 | 45% | 48% | 55% | 58% | 61% | 71% | 66% | 59% | 70% | 65% | 58% | 47% | 58,9% | 58,9% | |
| 2008 | 45% | 48% | 56% | 57% | 62% | 67% | 64% | 59% | 68% | 62% | 54% | 45% | 57,5% | 57,5% | |
| 2009 | 43% | 48% | 52% | 54% | 60% | 66% | 60% | 56% | 68% | 61% | 50% | 45% | 55,5% | 55,5% | |
| 2010 | 42% | 46% | 53% | 56% | 61% | 68% | 62% | 59% | 68% | 58% | 51% | 43% | 55,7% | 55,7% | 0,4% |
| 2011 | 43% | 45% | 52% | 56% | 61% | 68% | 63% | 60% | 69% | 60% | 51% | 44% | 56,2% | 56,2% | 0,8% |
| 2012 | 42% | 45% | 49% | 55% | 57% | 65% | 62% | 56% | 66% | 58% | 52% | 43% | 54,5% | 54,5% | -3,0% |



Source : ORTCA
Enquête INSEE DT ORTCA

30/04/2013

Occupation

Hôtel Zéro étoile

Champagne Ardenne

ch disponibles

| | janv | févr | mars | avr | mai | juin | juil | août | sept | oct | nov | déc | annuel | cumul | 11/12 |
|------|--------|--------|--------|--------|--------|--------|--------|--------|--------|--------|--------|--------|----------------|---------|-------|
| 2005 | 40 727 | 36 909 | 40 838 | 39 728 | 43 966 | 42 397 | 44 064 | 42 979 | 42 239 | 43 492 | 42 102 | 43 215 | 502 656 | 502 656 | |
| 2006 | 43 296 | 39 211 | 43 275 | 42 112 | 43 239 | 41 908 | 42 885 | 42 020 | 41 056 | 42 277 | 40 934 | 41 983 | 503 680 | 503 680 | |
| 2007 | 42 158 | 38 089 | 42 190 | 40 947 | 42 148 | 40 756 | 42 165 | 42 237 | 41 102 | 42 394 | 41 048 | 42 070 | 497 229 | 497 229 | |
| 2008 | 42 055 | 39 746 | 42 474 | 41 414 | 42 881 | 41 100 | 42 372 | 42 295 | 41 113 | 42 347 | 41 028 | 42 285 | 500 893 | 500 893 | |
| 2009 | 42 458 | 38 336 | 42 300 | 41 114 | 42 460 | 40 918 | 42 016 | 41 829 | 40 720 | 42 179 | 40 640 | 41 873 | 496 626 | 496 626 | |
| 2010 | 41 606 | 37 673 | 41 726 | 40 205 | 41 533 | 41 320 | 42 830 | 42 624 | 41 270 | 42 970 | 41 040 | 43 673 | 498 470 | 498 470 | 0% |
| 2011 | 43 683 | 37 852 | 43 385 | 41 939 | 46 140 | 44 815 | 45 996 | 43 680 | 42 362 | 43 343 | 38 415 | 39 276 | 510 886 | 510 886 | 2% |
| 2012 | 39 251 | 36 988 | 37 971 | 36 241 | 37 344 | 36 370 | 28 600 | 26 158 | 25 280 | 26 326 | 25 458 | 25 770 | 381 757 | 381 757 | -25% |

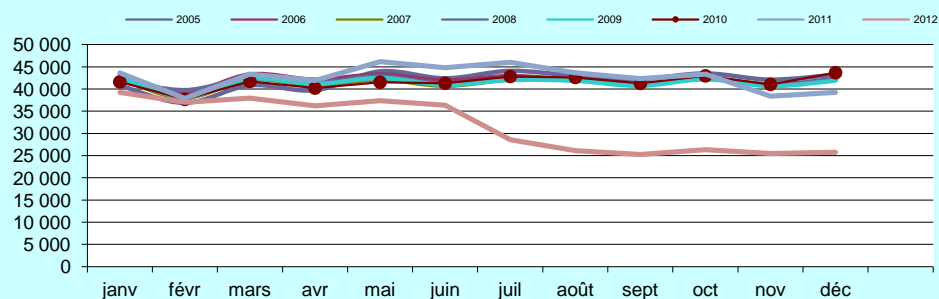
ch occupées

| | janv | févr | mars | avr | mai | juin | juil | août | sept | oct | nov | déc | annuel | cumul | 11/12 |
|------|--------|--------|--------|--------|--------|--------|--------|--------|--------|--------|--------|--------|----------------|---------|-------|
| 2005 | 23 171 | 22 721 | 26 061 | 26 290 | 29 807 | 31 680 | 33 353 | 32 815 | 30 557 | 28 021 | 25 354 | 22 994 | 332 822 | 332 822 | |
| 2006 | 22 058 | 22 175 | 25 981 | 26 065 | 28 118 | 29 973 | 29 741 | 28 352 | 29 359 | 26 372 | 24 404 | 22 007 | 314 992 | 314 992 | |
| 2007 | 23 617 | 22 958 | 26 226 | 27 459 | 28 072 | 31 082 | 32 588 | 29 192 | 29 314 | | 25 617 | 21 781 | 327 011 | 327 011 | |
| 2008 | 22 268 | 22 975 | 26 461 | 26 706 | 27 787 | 29 494 | 30 926 | 27 740 | 28 336 | 26 994 | 23 248 | 21 954 | 315 145 | 315 145 | |
| 2009 | 21 013 | 21 476 | 24 628 | 25 869 | 26 744 | 28 528 | 29 107 | 26 301 | 28 997 | 26 806 | 21 327 | 20 770 | 301 473 | 301 473 | |
| 2010 | 20 015 | 20 475 | 26 272 | 26 245 | 27 229 | 30 434 | 30 968 | 30 101 | 30 709 | 26 840 | 22 836 | 21 539 | 313 662 | 313 662 | 4% |
| 2011 | 23 123 | 20 794 | 25 301 | 25 932 | 30 245 | 31 128 | 30 809 | 31 044 | 28 593 | 26 121 | 19 347 | 18 534 | 310 971 | 310 971 | -1% |
| 2012 | 19 258 | 18 545 | 20 499 | 20 605 | 22 492 | 24 038 | 19 460 | 16 317 | 16 634 | 15 867 | 13 884 | 11 880 | 219 479 | 219 479 | -29% |

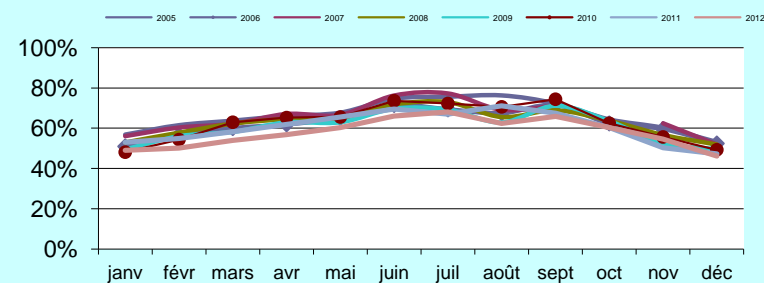
tx occupation

| | janv | févr | mars | avr | mai | juin | juil | août | sept | oct | nov | déc | annuel | cumul | 11/12 |
|------|------|------|------|-----|-----|------|------|------|------|-----|-----|-------|--------------|-------|-------|
| 2005 | 57% | 62% | 64% | 66% | 68% | 75% | 76% | 76% | 72% | 64% | 60% | 53% | 66,2% | 66,2% | |
| 2006 | 51% | 57% | 60% | 62% | 65% | 72% | 69% | 67% | 72% | 62% | 60% | 52% | 62,5% | 62,5% | |
| 2007 | 56% | 60% | 62% | 67% | 67% | 76% | 77% | 69% | 71% | | 62% | 52% | 65,8% | 65,8% | |
| 2008 | 53% | 58% | 62% | 64% | 65% | 72% | 73% | 66% | 69% | 64% | 57% | 52% | 62,9% | 62,9% | |
| 2009 | 49% | 56% | 58% | 63% | 63% | 70% | 69% | 63% | 71% | 64% | 52% | 50% | 60,7% | 60,7% | |
| 2010 | 48% | 54% | 63% | 65% | 66% | 74% | 72% | 71% | 74% | 62% | 56% | 49,3% | 62,9% | 62,9% | 4% |
| 2011 | 53% | 55% | 58% | 62% | 66% | 69% | 67% | 71% | 67% | 60% | 50% | 47,2% | 60,9% | 60,9% | -3% |
| 2012 | 49% | 50% | 54% | 57% | 60% | 66% | 68% | 62% | 66% | 60% | 55% | 46,1% | 57,5% | 57,5% | -6% |

Chambres disponibles



Taux d'occupation



Occupation

Hôtel Une étoile Champagne Ardenne

ch offertes

| | janv | févr | mars | avr | mai | juin | juil | août | sept | oct | nov | déc |
|------|-------|-------|-------|-------|-------|-------|-------|-------|-------|-------|-------|-------|
| 2005 | 21700 | 19024 | 21465 | 21574 | 22326 | 21546 | 22063 | 20386 | 20536 | 21469 | 19879 | 20100 |
| 2006 | 20404 | 18133 | 20837 | 21211 | 22143 | 21398 | 21770 | 19456 | 20602 | 21034 | 19182 | 19526 |
| 2007 | 19683 | 17655 | 19969 | 20199 | 20950 | 20295 | 21244 | 19218 | 20034 | 20363 | 18561 | 18420 |
| 2008 | 19249 | 18161 | 19174 | 19458 | 19976 | 18818 | 19518 | 17454 | 18705 | 19349 | 17733 | 18097 |
| 2009 | 18185 | 15940 | 17979 | 18666 | 18300 | 17988 | 18588 | 16979 | 17805 | 17987 | 16322 | 16580 |
| 2010 | 16785 | 14882 | 16856 | 17402 | 17698 | 17362 | 17985 | 17015 | 16508 | 17147 | 16500 | 16887 |
| 2011 | 17307 | 17344 | 18436 | 20420 | 18072 | 17524 | 18356 | 19448 | 19673 | 22183 | 22082 | 22708 |
| 2012 | 23080 | 20472 | 27361 | 25698 | 25214 | 24628 | 35534 | 36345 | 36071 | 37599 | 36186 | 37496 |

| annuel | cumul | 11/12 |
|----------------|---------|-------|
| 252 068 | 252 068 | |
| 245 696 | 245 696 | |
| 236 916 | 236 916 | |
| 225 103 | 225 103 | |
| 211 319 | 211 319 | |
| 203 027 | 203 027 | -4% |
| 233 553 | 233 553 | 15% |
| 365 684 | 365 684 | 57% |

ch occupées

| | janv | févr | mars | avr | mai | juin | juil | août | sept | oct | nov | déc |
|------|--------|-------|--------|--------|--------|--------|--------|--------|--------|--------|--------|--------|
| 2005 | 10 227 | 9 626 | 11 014 | 11 149 | 12 215 | 13 267 | 12 188 | 11 673 | 11 724 | 10 740 | 9 038 | 8 693 |
| 2006 | 8 687 | 8 367 | 10 438 | 10 501 | 10 469 | 12 517 | 11 231 | 8 895 | 11 588 | 11 472 | 9 825 | 8 046 |
| 2007 | 8 886 | 8 749 | 10 294 | 11 220 | 12 505 | 13 640 | 13 625 | 10 333 | 12 856 | | 10 720 | 8 301 |
| 2008 | 9 136 | 9 049 | 10 212 | 10 786 | 11 924 | 12 355 | 13 016 | 10 278 | 12 213 | 11 049 | 9 377 | 8 222 |
| 2009 | 7 760 | 7 920 | 9 971 | 10 179 | 10 933 | 11 464 | 11 219 | 9 092 | 11 709 | 10 306 | 8 095 | 7 341 |
| 2010 | 7 469 | 6 978 | 9 152 | 8 915 | 10 080 | 11 750 | 10 151 | 10 241 | 10 390 | 9 703 | 7 839 | 7 312 |
| 2011 | 6 991 | 8 422 | 10 201 | 11 850 | 10 843 | 11 684 | 10 488 | 11 669 | 12 672 | 13 632 | 12 571 | 10 568 |
| 2012 | 9 696 | 9 366 | 15 004 | 15 469 | 15 033 | 16 016 | 24 976 | 23 725 | 26 053 | 23 774 | 20 783 | 19 213 |

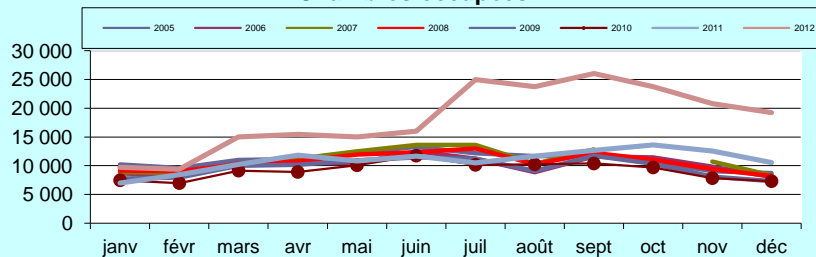
| annuel | cumul | 11/12 |
|----------------|---------|-------|
| 131 555 | 131 555 | |
| 123 965 | 123 965 | |
| 134 732 | 134 732 | |
| 127 356 | 127 356 | |
| 115 989 | 115 989 | |
| 109 981 | 109 981 | -5% |
| 131 589 | 131 589 | 20% |
| 219 108 | 219 108 | 67% |

Tx occupation

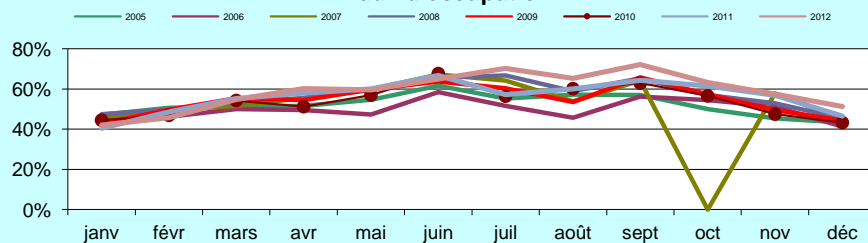
| | janv | févr | mars | avr | mai | juin | juil | août | sept | oct | nov | déc |
|------|------|------|------|-----|-----|------|------|------|------|-----|-----|-----|
| 2005 | 47% | 51% | 51% | 52% | 55% | 62% | 55% | 57% | 57% | 50% | 45% | 43% |
| 2006 | 43% | 46% | 50% | 50% | 47% | 58% | 52% | 46% | 56% | 55% | 51% | 41% |
| 2007 | 45% | 50% | 52% | 56% | 60% | 67% | 64% | 54% | 64% | 0% | 58% | 45% |
| 2008 | 47% | 50% | 53% | 55% | 60% | 66% | 67% | 59% | 65% | 57% | 53% | 45% |
| 2009 | 43% | 50% | 55% | 55% | 60% | 64% | 60% | 54% | 66% | 57% | 50% | 44% |
| 2010 | 44% | 47% | 54% | 51% | 57% | 68% | 56% | 60% | 63% | 57% | 48% | 43% |
| 2011 | 40% | 49% | 55% | 58% | 60% | 67% | 57% | 60% | 64% | 61% | 57% | 47% |
| 2012 | 42% | 46% | 55% | 60% | 60% | 65% | 70% | 65% | 72% | 63% | 57% | 51% |

| annuel | cumul | 11/12 |
|--------------|-------|-------|
| 52,2% | 52,2% | |
| 50,5% | 50,5% | |
| 56,9% | 56,9% | |
| 56,6% | 56,6% | |
| 54,9% | 54,9% | |
| 54,2% | 54,2% | -1% |
| 56,3% | 56,3% | 4% |
| 59,9% | 59,9% | 6% |

Chambres occupées



Taux d'occupation



Occupation ch disponibles

Hôtel Deux étoiles Champagne-Ardenne

| | janv | févr | mars | avr | mai | juin | juil | août | sept | oct | nov | déc | annuel | cumul | 11/12 |
|------|--------|--------|--------|--------|--------|--------|--------|--------|--------|--------|--------|--------|------------------|-----------|-------|
| 2005 | 114682 | 106134 | 121407 | 126983 | 132556 | 128627 | 133206 | 130463 | 128755 | 131163 | 119586 | 115244 | 1 488 806 | 1 488 806 | |
| 2006 | 115961 | 107433 | 124050 | 129276 | 133406 | 130109 | 133843 | 132082 | 129870 | 133029 | 121215 | 118003 | 1 508 277 | 1 508 277 | |
| 2007 | 117723 | 108856 | 124915 | 129787 | 134613 | 130739 | 133696 | 131541 | 128979 | 131544 | 120144 | 114526 | 1 506 273 | 1 506 273 | |
| 2008 | 116907 | 112233 | 124397 | 128586 | 133393 | 129168 | 133484 | 131405 | 127890 | 130742 | 119532 | 114084 | 1 501 611 | 1 501 611 | |
| 2009 | 114487 | 106394 | 120885 | 126825 | 130615 | 126920 | 129992 | 128269 | 125507 | 127178 | 115881 | 109092 | 1 461 549 | 1 461 549 | |
| 2010 | 110033 | 102326 | 118003 | 123891 | 128759 | 123701 | 130100 | 125902 | 125405 | 129879 | 118822 | 111866 | 1 448 687 | 1 448 687 | -1% |
| 2011 | 112519 | 101917 | 117863 | 124277 | 129114 | 125123 | 127967 | 122913 | 118223 | 120113 | 108651 | 100828 | 1 409 508 | 1 409 508 | -3% |
| 2012 | 102118 | 97988 | 100816 | 107562 | 111803 | 109501 | 101752 | 95592 | 92833 | 92390 | 81608 | 75905 | 1 169 868 | 1 169 868 | -17% |

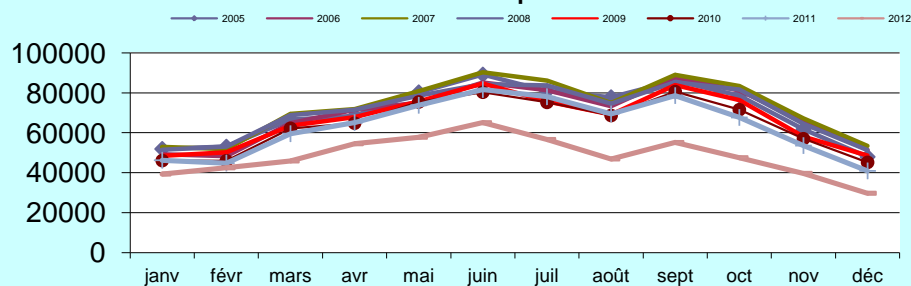
ch occupées

| | janv | févr | mars | avr | mai | juin | juil | août | sept | oct | nov | déc | annuel | cumul | 11/12 |
|------|-------|-------|-------|-------|-------|-------|-------|-------|-------|-------|-------|-------|----------------|---------|-------|
| 2005 | 51881 | 53016 | 66485 | 68453 | 80210 | 89095 | 80855 | 77759 | 86074 | 78627 | 61693 | 47919 | 842 067 | 842 067 | |
| 2006 | 49309 | 48311 | 64846 | 71558 | 75031 | 85140 | 81263 | 73230 | 87919 | 81123 | 66069 | 51467 | 831 871 | 831 871 | |
| 2007 | 52858 | 51767 | 69431 | 71753 | 80800 | 90275 | 86064 | 74795 | 88991 | 83293 | 67194 | 53363 | 870 860 | 870 860 | |
| 2008 | 51551 | 53003 | 68723 | 71566 | 78586 | 84388 | 83717 | 74493 | 85339 | 81647 | 64471 | 51348 | 848 754 | 848 754 | |
| 2009 | 48441 | 50115 | 63449 | 67804 | 75739 | 84612 | 75604 | 69126 | 83810 | 76360 | 57997 | 48530 | 801 378 | 801 378 | |
| 2010 | 46062 | 45952 | 62186 | 64772 | 75387 | 80272 | 75198 | 68630 | 80563 | 71526 | 56971 | 45154 | 772 672 | 772 672 | -4% |
| 2011 | 46225 | 44786 | 59523 | 65071 | 73736 | 81622 | 78032 | 69407 | 78599 | 67640 | 53559 | 40897 | 759 097 | 759 097 | -2% |
| 2012 | 39325 | 42454 | 45880 | 54494 | 57760 | 65023 | 56606 | 46884 | 55102 | 47494 | 39650 | 29710 | 580 381 | 580 381 | -24% |

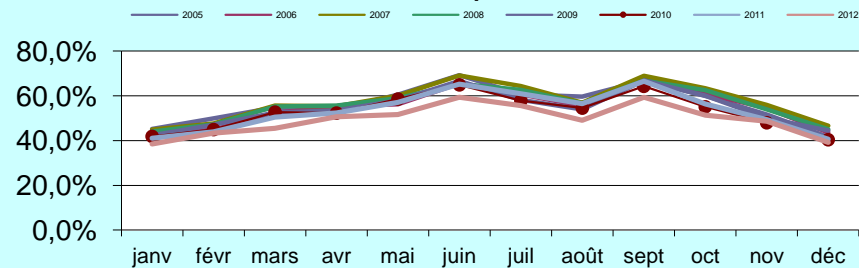
Tx occupation

| | janv | févr | mars | avr | mai | juin | juil | août | sept | oct | nov | déc | annuel | cumul | 11/12 |
|------|-------|-------|-------|-------|-------|-------|-------|-------|-------|-------|-------|-------|--------------|--------|-------|
| 2005 | 45,2% | 50,0% | 54,8% | 53,9% | 60,5% | 69,3% | 60,7% | 59,6% | 66,9% | 59,9% | 51,6% | 41,6% | 56,6% | 56,56% | |
| 2006 | 42,5% | 45,0% | 52,3% | 55,4% | 56,2% | 65,4% | 60,7% | 55,4% | 67,7% | 61,0% | 54,5% | 43,6% | 55,2% | 55,15% | |
| 2007 | 44,9% | 47,6% | 55,6% | 55,3% | 60,0% | 69,0% | 64,4% | 56,9% | 69,0% | 63,3% | 55,9% | 46,6% | 57,8% | 57,82% | |
| 2008 | 44,1% | 47,2% | 55,2% | 55,7% | 58,9% | 65,3% | 62,7% | 56,7% | 66,7% | 62,4% | 53,9% | 45,0% | 56,5% | 56,52% | |
| 2009 | 42,3% | 47,1% | 52,5% | 53,5% | 58,0% | 66,7% | 58,2% | 53,9% | 66,8% | 60,0% | 50,0% | 44,5% | 54,8% | 54,80% | |
| 2010 | 41,9% | 44,9% | 52,7% | 52,3% | 58,5% | 64,9% | 57,8% | 54,5% | 64,2% | 55,1% | 47,9% | 40,4% | 53,3% | 53,34% | -3% |
| 2011 | 41,1% | 43,9% | 50,5% | 52,4% | 57,1% | 65,2% | 61,0% | 56,5% | 66,5% | 56,3% | 49,3% | 40,6% | 53,9% | 53,90% | 1% |
| 2012 | 38,5% | 43,3% | 45,5% | 50,7% | 51,7% | 59,4% | 55,6% | 49,0% | 59,4% | 51,4% | 48,6% | 39,1% | 49,6% | 49,61% | -8% |

Chambres occupées



Taux d'occupation



Occupation

ch disponibles

| | janv | févr | mars | avr | mai | juin | juil | août | sept | oct | nov | déc |
|------|-------|-------|-------|-------|-------|-------|--------|--------|--------|--------|--------|--------|
| 2005 | 60522 | 55262 | 63267 | 64519 | a | 64708 | 66600 | 66208 | 68066 | 70086 | 66463 | 65837 |
| 2006 | 66120 | 59638 | 68443 | 66644 | 71523 | 69205 | 71367 | 70089 | 69294 | 71102 | 65287 | 65702 |
| 2007 | 66804 | 60920 | 69284 | 69040 | 71399 | 69820 | 71901 | 70643 | 69225 | 71459 | 65760 | 64111 |
| 2008 | 69187 | 66893 | 72974 | 71402 | 73526 | 69905 | 72198 | 71093 | 70818 | 74424 | 70379 | 67695 |
| 2009 | 68629 | 63456 | 71798 | 72576 | 75001 | 72750 | 75532 | 74702 | 70626 | 74508 | 70421 | 67991 |
| 2010 | 68585 | 64820 | 73905 | 72092 | 75028 | 72843 | 75241 | 75812 | 74079 | 77288 | 74236 | 73480 |
| 2011 | 74258 | 74322 | 83255 | 81823 | 85065 | 82795 | 85035 | 87774 | 84600 | 88361 | 79746 | 78083 |
| 2012 | 77974 | 75873 | 84220 | 84751 | 89454 | 86326 | 100743 | 105865 | 104436 | 109601 | 105236 | 100870 |

| annuel | cumul | 11/12 |
|------------------|-----------|-------|
| 711 538 | 711 538 | |
| 814 506 | 814 506 | |
| 822 073 | 822 073 | |
| 850 494 | 850 494 | |
| 857 990 | 857 990 | |
| 877 409 | 877 409 | 2% |
| 985 117 | 985 117 | 12% |
| 1 125 349 | 1 125 349 | 14% |

ch occupées

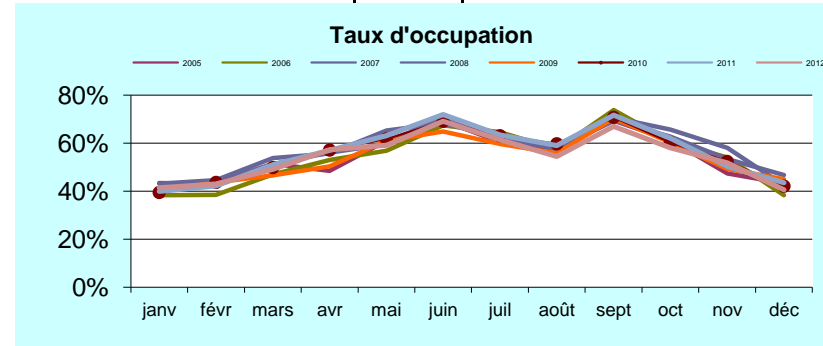
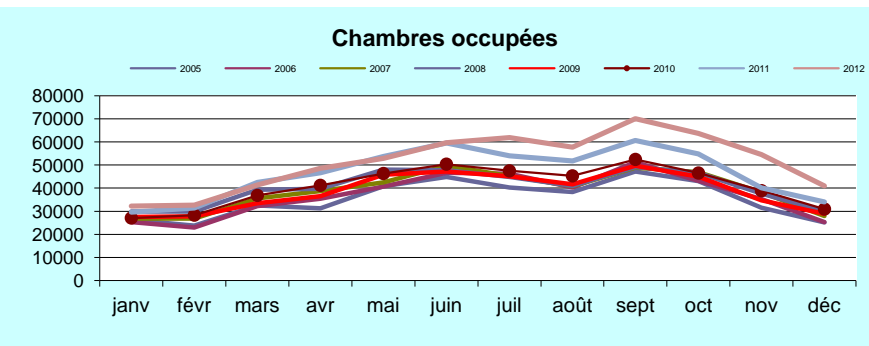
| | janv | févr | mars | avr | mai | juin | juil | août | sept | oct | nov | déc |
|------|-------|-------|-------|-------|-------|-------|-------|-------|-------|-------|-------|-------|
| 2005 | 26238 | 23757 | 32499 | 31264 | 40850 | 44907 | 40242 | 38286 | 47246 | 42976 | 31480 | 25090 |
| 2006 | 25333 | 22910 | 32219 | 35373 | 40726 | 46632 | 46166 | 40272 | 51197 | 43124 | 35338 | 25288 |
| 2007 | 26884 | 26763 | 35559 | 38706 | 42532 | 49759 | 45259 | 40786 | 48917 | 46924 | 38197 | 27914 |
| 2008 | 29872 | 29817 | 39297 | 39735 | 48001 | 47753 | 44895 | 40893 | 49168 | 46669 | 37616 | 29977 |
| 2009 | 27502 | 27732 | 33462 | 36516 | 45761 | 47175 | 45095 | 41722 | 49723 | 44974 | 34749 | 28962 |
| 2010 | 27084 | 28309 | 36847 | 41206 | 46330 | 50377 | 47493 | 45305 | 52430 | 46550 | 38897 | 30952 |
| 2011 | 29614 | 31376 | 42502 | 46672 | 53747 | 59538 | 53986 | 51828 | 60682 | 54815 | 40184 | 34070 |
| 2012 | 32285 | 32596 | 41379 | 48590 | 52879 | 59703 | 61890 | 57750 | 70018 | 63707 | 54578 | 40973 |

| annuel | cumul | 11/12 |
|----------------|---------|-------|
| 424 834 | 424 834 | |
| 447 011 | 447 011 | |
| 472 582 | 472 582 | |
| 482 678 | 482 678 | |
| 464 693 | 464 693 | |
| 491 781 | 491 781 | 6% |
| 559 014 | 559 014 | 14% |
| 616 347 | 616 347 | 10% |

Tx occupation

| | janv | févr | mars | avr | mai | juin | juil | août | sept | oct | nov | déc |
|------|------|------|------|-----|-----|------|------|------|------|-----|-----|-----|
| 2005 | 43% | 43% | 51% | 48% | 61% | 69% | 60% | 58% | 69% | 61% | 47% | 43% |
| 2006 | 38% | 38% | 47% | 53% | 57% | 67% | 65% | 57% | 74% | 61% | 54% | 38% |
| 2007 | 40% | 44% | 51% | 56% | 60% | 71% | 63% | 58% | 71% | 66% | 58% | 42% |
| 2008 | 43% | 45% | 54% | 56% | 65% | 68% | 62% | 58% | 69% | 63% | 53% | 47% |
| 2009 | 40% | 44% | 47% | 50% | 61% | 65% | 60% | 56% | 70% | 60% | 49% | 45% |
| 2010 | 39% | 44% | 50% | 57% | 62% | 69% | 63% | 60% | 71% | 60% | 52% | 42% |
| 2011 | 40% | 42% | 51% | 57% | 63% | 72% | 63% | 59% | 72% | 62% | 50% | 44% |
| 2012 | 41% | 43% | 49% | 57% | 59% | 69% | 61% | 55% | 67% | 58% | 52% | 41% |

| annuel | cumul | 11/12 |
|--------------|-------|-------|
| 59,7% | 59,7% | |
| 54,9% | 54,9% | |
| 57,5% | 57,5% | |
| 56,8% | 56,8% | |
| 54,2% | 54,2% | |
| 56,0% | 56,0% | 3% |
| 56,7% | 56,7% | 1% |
| 54,8% | 54,8% | -3% |



Occupation

ch disponibles

Quatre étoiles

Champagne-Ardenne

| | janv | févr | mars | avr | mai | juin | juil | août | sept | oct | nov | déc |
|------|-------|-------|-------|-------|-------|-------|-------|-------|-------|-------|-------|-------|
| 2005 | 11056 | 9716 | 11482 | 11160 | 11532 | 11160 | 11532 | 11532 | 11160 | 11484 | 11136 | 10709 |
| 2006 | 10912 | 9564 | 11388 | 11160 | 11532 | 11160 | 11532 | 11532 | 11160 | 11532 | 11160 | 10326 |
| 2007 | 11212 | 9744 | 11484 | 11160 | 11532 | 11130 | 11501 | 11501 | 11130 | 11381 | 11010 | 9919 |
| 2008 | 8942 | 8835 | 10413 | 10170 | 10509 | 10170 | 10509 | 10509 | 10170 | 10437 | 10098 | 8720 |
| 2009 | 7844 | 7540 | 9324 | 10435 | 10912 | 10560 | 10912 | 10912 | 10560 | 10888 | 10488 | 8189 |
| 2010 | 7608 | 8016 | 10480 | 10382 | 10622 | 10382 | 10561 | 10585 | 9930 | 10093 | 9618 | 8376 |
| 2011 | 8199 | 7584 | 9084 | 9738 | 9517 | 9210 | 9517 | 9083 | 11850 | 12276 | 18725 | 17632 |
| 2012 | 18165 | 17212 | 25889 | 25170 | 26009 | 26790 | 28675 | 29188 | 28360 | 29460 | 28513 | 29884 |

| annuel | cumul | 11/12 |
|----------------|---------|-------|
| 133 659 | 133 659 | |
| 133 183 | 133 183 | |
| 131 712 | 131 712 | |
| 119 482 | 119 482 | |
| 118 564 | 118 564 | |
| 116 653 | 116 653 | -2% |
| 132 415 | 132 415 | 14% |
| 313 315 | 313 315 | 137% |

ch occupées

| | janv | févr | mars | avr | mai | juin | juil | août | sept | oct | nov | déc |
|------|-------|-------|--------|--------|--------|--------|--------|--------|--------|--------|--------|--------|
| 2005 | 3 140 | 3 766 | 4 846 | 5 660 | 7 146 | 7 989 | 7 650 | 7 259 | 8 686 | 7 470 | 5 052 | 3 445 |
| 2006 | 2 609 | 3 402 | 4 394 | 6 260 | 6 963 | 7 846 | 8 196 | 7 456 | 8 644 | 7 348 | 5 469 | 3 666 |
| 2007 | 3 412 | 3 772 | 4 844 | 6 959 | 7 822 | 8 191 | 8 160 | 7 591 | 8 864 | 8 353 | 6 047 | 4 107 |
| 2008 | 2 873 | 3 353 | 5 000 | 5 578 | 7 319 | 7 012 | 6 804 | 6 317 | 7 098 | 6 559 | 4 957 | 3 170 |
| 2009 | 2 427 | 2 820 | 3 647 | 5 188 | 6 375 | 6 487 | 6 448 | 6 399 | 7 403 | 6 797 | 4 849 | 3 175 |
| 2010 | 2 500 | 3 109 | 4 140 | 5 605 | 6 717 | 6 870 | 7 235 | 6 399 | 7 174 | 6 630 | 4 871 | 3 128 |
| 2011 | 3 060 | 3 013 | 4 277 | 5 688 | 6 068 | 6 571 | 6 229 | 5 618 | 9 555 | 8 602 | 10 653 | 8 941 |
| 2012 | 8 569 | 8 141 | 13 553 | 15 808 | 16 071 | 20 015 | 20 549 | 19 767 | 21 682 | 19 248 | 16 482 | 13 991 |

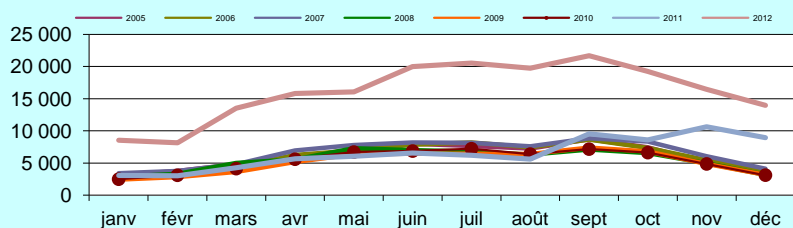
| annuel | cumul | 11/12 |
|----------------|---------|-------|
| 72 108 | 72 108 | |
| 72 306 | 72 306 | |
| 77 771 | 77 771 | |
| 66 042 | 66 042 | |
| 61 963 | 61 963 | |
| 64 379 | 64 379 | 4% |
| 78 274 | 78 274 | 22% |
| 193 876 | 193 876 | 148% |

Tx occupation

| | janv | févr | mars | avr | mai | juin | juil | août | sept | oct | nov | déc |
|------|------|------|------|-----|-----|------|------|------|------|-----|-----|-----|
| 2005 | 28% | 39% | 42% | 51% | 62% | 72% | 66% | 63% | 78% | 65% | 45% | 32% |
| 2006 | 24% | 36% | 39% | 56% | 60% | 70% | 71% | 65% | 77% | 64% | 49% | 36% |
| 2007 | 30% | 39% | 42% | 62% | 68% | 74% | 71% | 66% | 80% | 73% | 55% | 41% |
| 2008 | 32% | 38% | 48% | 55% | 70% | 69% | 65% | 60% | 70% | 63% | 49% | 36% |
| 2009 | 31% | 37% | 39% | 50% | 58% | 61% | 59% | 59% | 70% | 62% | 46% | 39% |
| 2010 | 33% | 39% | 40% | 54% | 63% | 66% | 69% | 60% | 72% | 66% | 51% | 37% |
| 2011 | 37% | 40% | 47% | 58% | 64% | 71% | 65% | 62% | 81% | 70% | 57% | 51% |
| 2012 | 47% | 47% | 52% | 63% | 62% | 75% | 72% | 68% | 76% | 65% | 58% | 47% |

| annuel | cumul | 11/12 |
|--------------|-------|-------|
| 53,9% | 53,9% | |
| 54,3% | 54,3% | |
| 59,0% | 59,0% | |
| 55,3% | 55,3% | |
| 52,3% | 52,3% | |
| 55,2% | 55,2% | 6% |
| 59,1% | 59,1% | 7% |
| 61,9% | 61,9% | 5% |

Chambres occupées



Taux d'occupation

